

ForwardT

Software setup

Revision from 09 September 2005
ForwardT Software 3.9.0

SoftLab-NSK, Ltd.

Notice

The information in this document is subject to change without prior notice in order to improve reliability, design, or function and does not represent a commitment on the part of this company.

In no event will we be liable for direct, indirect, special, incidental, or consequential damages arising out of the use or the inability to use the product or documentation, even if advised of the possibility of such damages.

Copyright © 1997 - 2005 SoftLab-NSK, Ltd.
All Rights Reserved.

No part of this reference manual may be reproduced or transmitted in any form or by any means without the prior written permission of this company.

Throughout this manual, we make reference to product names that are trademarks of other companies. We are using these names for identification purposes only, with no intention of infringement of the trademarks.

FCC Information

FCC ID:

This equipment has been tested and found to comply with the limits for a Class B digital device, pursuant to Part 15 of the FCC Rules. These limits are designed to provide reasonable protection against harmful interference in a residential installation. This equipment generates uses and can radiate radio frequency energy and, if not installed and used in accordance with the instructions, may cause harmful interference to radio communications. However, there is no guarantee that interference will not occur in a particular installation. If this equipment does cause harmful interference to radio or television reception, which can be determined by turning the equipment off and on, the user is encouraged to try to correct the interference by one or more of the following measures:

- Reorient or relocate the receiving antenna.
- Increase the separation between the equipment and receiver.
- Connect the equipment into an outlet on a circuit different from that to which the receiver is connected.
- Consult the dealer or an experienced radio/TV technician for help.

Shielded cables and I/O cards must be used for this equipment to comply with the relevant FCC regulations. Changes or modifications not expressly approved in writing by SoftLab-NSK, Ltd. may void the user's authority to operate this equipment.

Limited Warranty

Our company warrants this product against defects in materials and workmanship for a period of one year from the date of purchase. During the warranty period, products determined by us to be defective in form or function will be repaired or replaced at our option, at no charge. This warranty does not apply if the product has been damaged by accident, abuse, misuse, or as a result of service or modification other than by us.

This warranty is in lieu of any other warranty expressed or implied. In no event shall we be held liable for incidental or consequential damages, such as lost revenue or lost business opportunities arising from the purchase of this product.

Table of Contents

1	TECHNICAL SPECIFICATIONS	4
1.1	System requirements	4
2	SOFTWARE INSTALLATION	5
3	FEATURES OF INSTALLATION UNDER WINDOWS XP	13

1 Technical specifications

Video formats:

PAL, SECAM: 720x576, 25 k/sec

NTSC: 720x480, 29.97 k/sec

Internal video processing:

YUV 4:2:2 or YUV α 4:2:2:4, 8-bits on component

Video inputs:

Two independent video channels can be simultaneously connected:

- Up to 12 composite
- Up to 6 S-Video
- Up to 3 component YUV, YUVS, RGB, RGBS)
- Optional SDI

Two channels of Time Base Correction.

Video outputs:

Possible combinations (optional SECAM):

- Y/C + CVBS
- YUV + CVBS
- YUVS/RGBS
- YUV + Key/ α
- Optional SDI

Synchronization:

Video output **Genlock** to one of video inputs.

Audio:

- inputs: 6 mono or 3 stereo;
- outputs: 6 mono or 3 stereo;
- format: uncompress (PCM), 16 bits, from 8 to 48 kHz;
- microphone amplifier for 2 stereo channels;
- audio configured delay (it is independent for each inputs);
- mixing of any input to any output with controlled volume level;
- audio synchronization to supporting video signal;
- optional balanced XLR-connectors.

1.1 System requirements


	<i>Minimum</i>			<i>Recommended</i>		
	Processor (GHz)	Memory (Mb)	Network	Processor (GHz)	Memory (Mb)	Network
ForwardT	P3 – 0.8	256	100 Mbits	P4 – 2.4	256	1 Gbits
ForwardTA	P3 – 1.4	512	100 Mbits	P4 – 3.0 (HT)	512	1 Gbits
ForwardTP	P4 – 2.4	512	100 Mbits	2 x P4 – 2.4	1024	1 Gbits

Disk: the recommended disk size is defined by needs of task at the rate of 15 Gb/hour (equivalent to data rate 4 Mbytes per second).

For use of disks larger than 100 Gb, it is strongly recommended to set additional memory at the rate of one Mb of memory for every Gb of disk space (in addition to the setting in the above table).

2 Software installation

In this chapter the procedure for setting up the software of complex *ForwardT* is described in detail. The setup information is applicable for computers using the standard operational systems *Microsoft Windows 2000, XP*. The versions of operational system should be established along with the license to use these operating systems.

 In more detail characteristics of *FD300* board, use of *SDI*-option, installation and connection to switching panels it is described in the document «*Hardware setup*».

For a complete *ForwardT* software installation it is necessary to open the file **ForwardTSoftware_xx_xx.exe** from the CD with a double-click on the mouse button.

If this software for the *FD300* board is already installed on your computer, it will first be necessary to uninstall the old software and then reboot the computer before installing the new version of the *ForwardT* software. When an older version of the software is found, the message shown in (Figure 1) will appear. Click on the **OK** button to uninstall the older versions of the software.

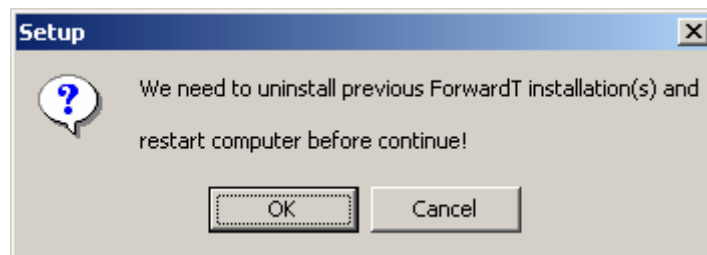


Figure 1. The message about computer restart

By pressing button **Cancel** the new software installation will be stopped. After pressing the **OK** button, the Uninstall message for deleting previous versions of *ForwardT Software* from your computer shown in (Figure 2) is displayed.

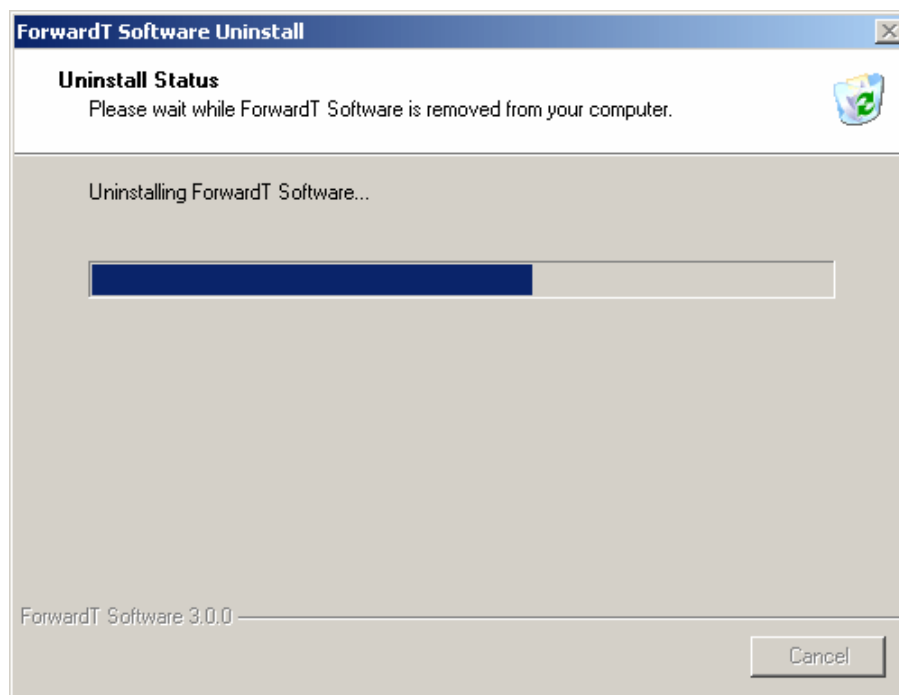


Figure 2. The Uninstall Status dialog

After uninstall of previous versions of *ForwardT Software* from your computer is complete, a message prompting a restart of the computer will appear (Figure 3).



Figure 3. The message about restart

After the restart, installation of the new version of *ForwardT Software* will continue.

In order for all *ForwardT* applications to work properly, it is necessary to install the components of *Microsoft.NET Framework*. If they are not installed, the message below (Figure 4) will appear.

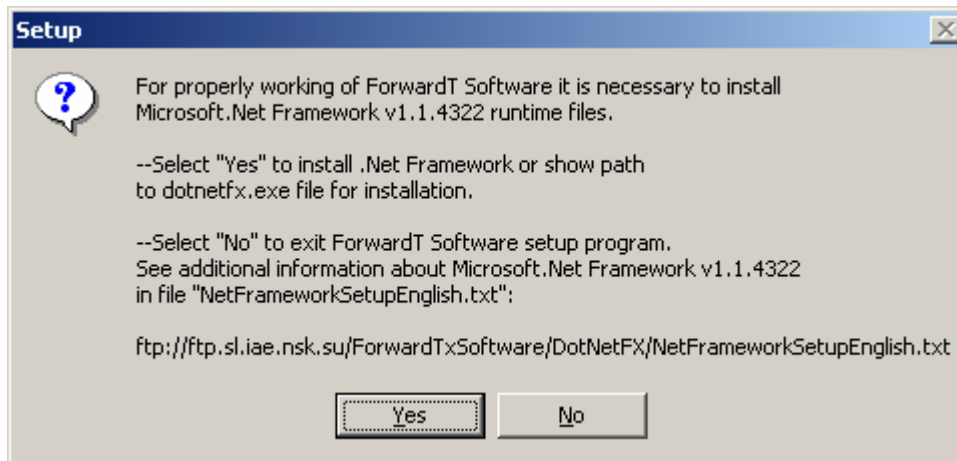




Figure 4. The message about *Microsoft.NET Framework* setup

 *Attention! Unless the application *Microsoft.NET Framework* is installed; you can't install *ForwardT Software* product on your computer.*

After set of the components *Microsoft.NET Framework* the installation program *ForwardT Software* will continue. By consistently pressing on the button **Next**, you can install *ForwardT* software on your computer (Figure 5).

 *We strongly recommend closely reading all information in each dialog during the installation process in order to correctly specify the necessary data for a successful installation.*

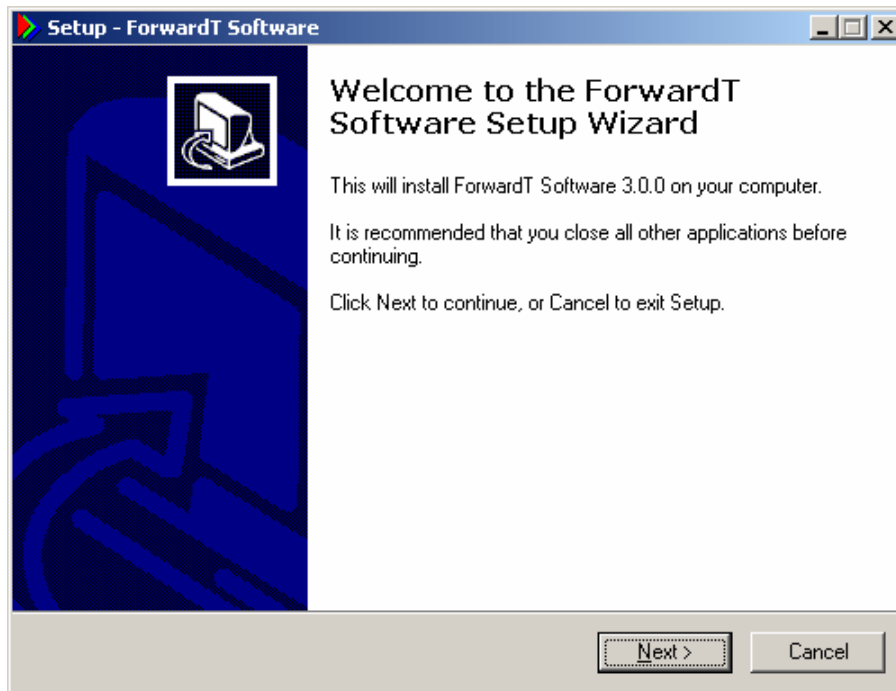


Figure 5. The Setup-ForwardT Software dialog

Choose the directory on your computer (Figure 6) in which the *ForwardT Software* will be installed so that you can find it easily later on. It can be an existing folder or new, it is up to you to specify.

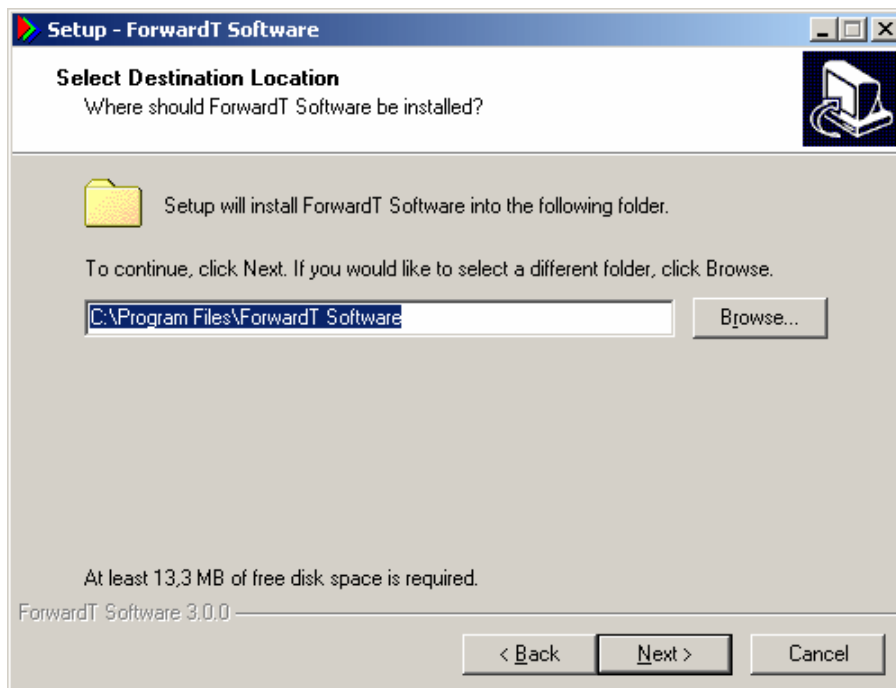


Figure 6. The folder selection

After you have chosen a place where the *ForwardT Software* will be installed, press the button **Next**. The dialog for selecting components from *ForwardT* package (Figure 7) will open. Set a tag opposite to the name corresponding to your product, and press the button **Next**.

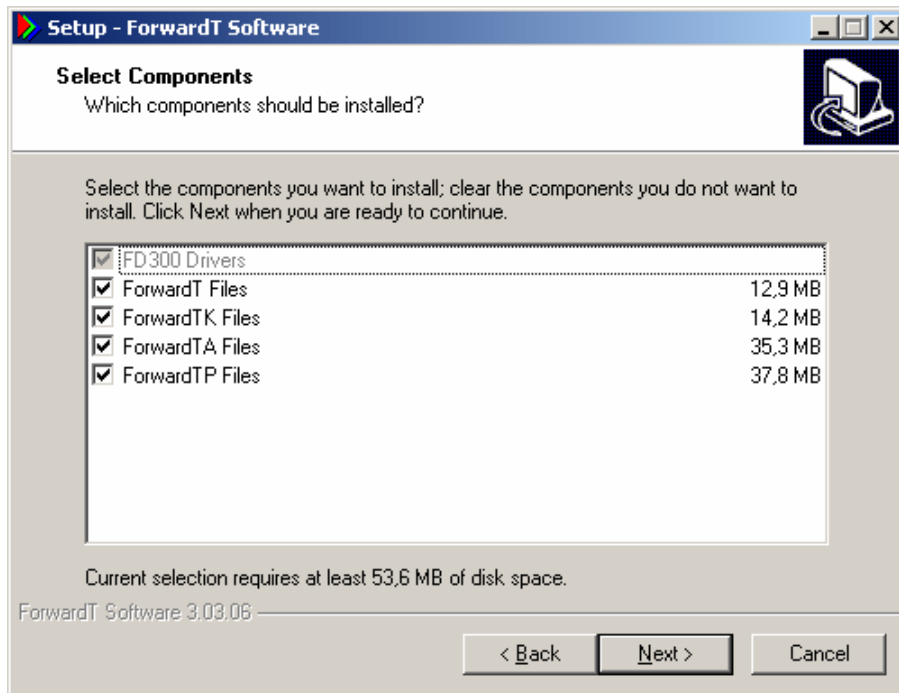


Figure 7. The *Select Components* dialog

In dialog of additional settings (Figure 8) it is possible to register plug-ins for Windows Media Player 9 by set option **Video and audio**. By default this option is switched off. If the option **Video and audio** is switched on Windows Media Player 9 will playback video and sound on the *FD300* hardware.

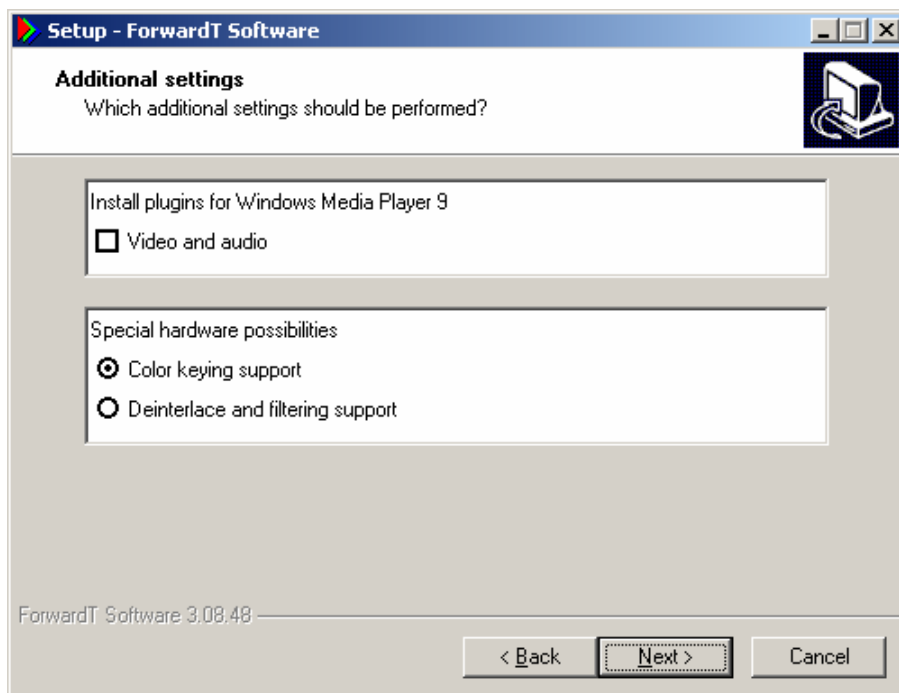



Figure 8. Additional settings

Special hardware possibilities in this dialog are intended for users of the software package *ForwardTK* and Windows Media Encoder

The option **Color keying support** allows supporting keying in the applications of software package *ForwardTK*.

 The option **Color keying support** should be switched on necessarily at work with product **ForwardTK!**

The option **Deinterlace and filtering support** allows supporting deinterlacing mode and filtration of input signal at use Windows Media Encoder.

 The option **Deinterlace and filtering support** should be switched on necessarily at work with *Windows Media Encoder* for convenience of the Internet broadcasting!

In the following dialog (Figure 9) it is necessary to choose folder for the **Start** menu, this is where it is possible to directly start *ForwardT* applications.

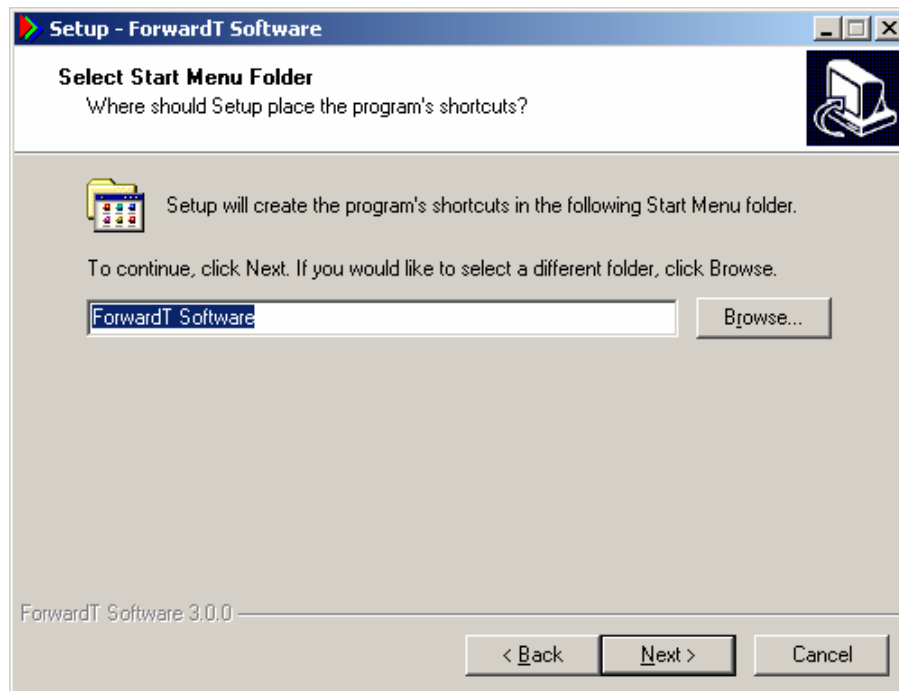


Figure 9. Selecting start menu folder

In the following step (Figure 10) you can set the flag **Create a desktop icons** to create icons for the *ForwardT* software applications.

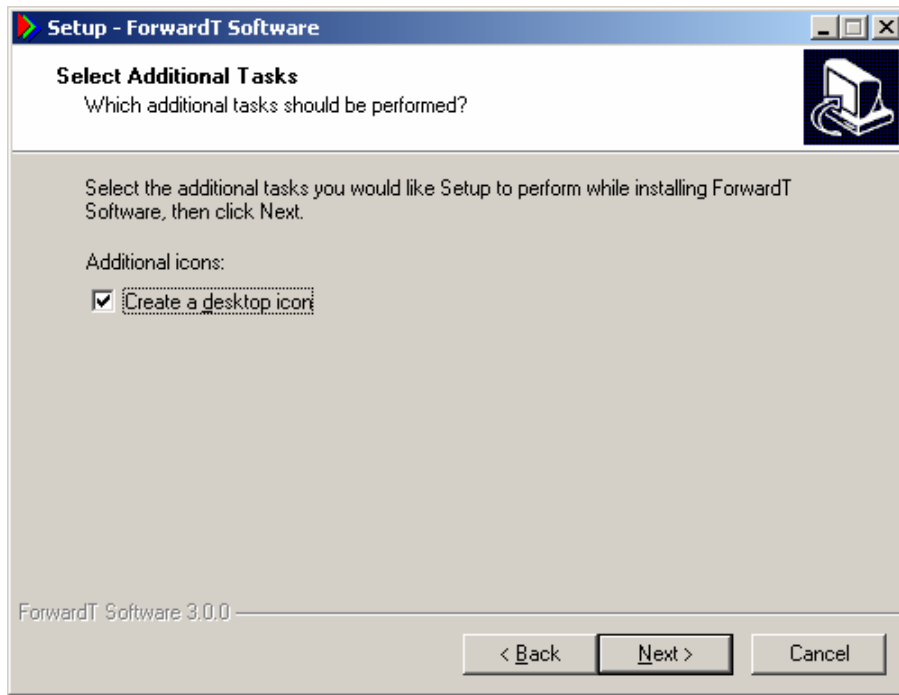


Figure 10. Creating a desktop icons

In the following dialog *Ready to Install* (Figure 11) the additional information before the actual copying process is displayed. If you want to change any previous settings, you can return to the previous pages by using the **Back** button.

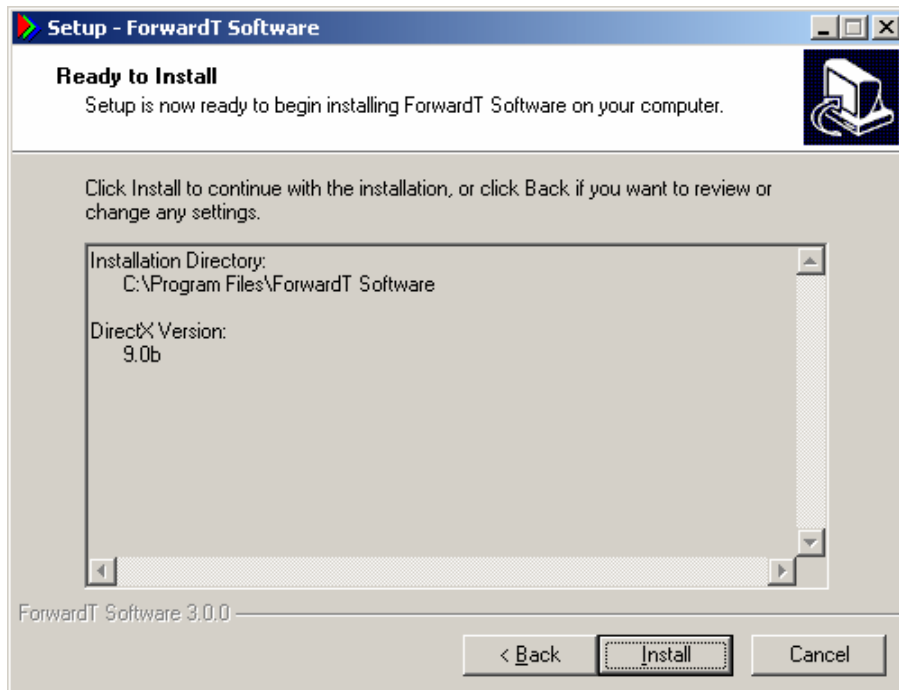


Figure 11. Ready to Install dialog

If all settings are made correctly, you should now press the button **Install** to start the file copying process (Figure 12).

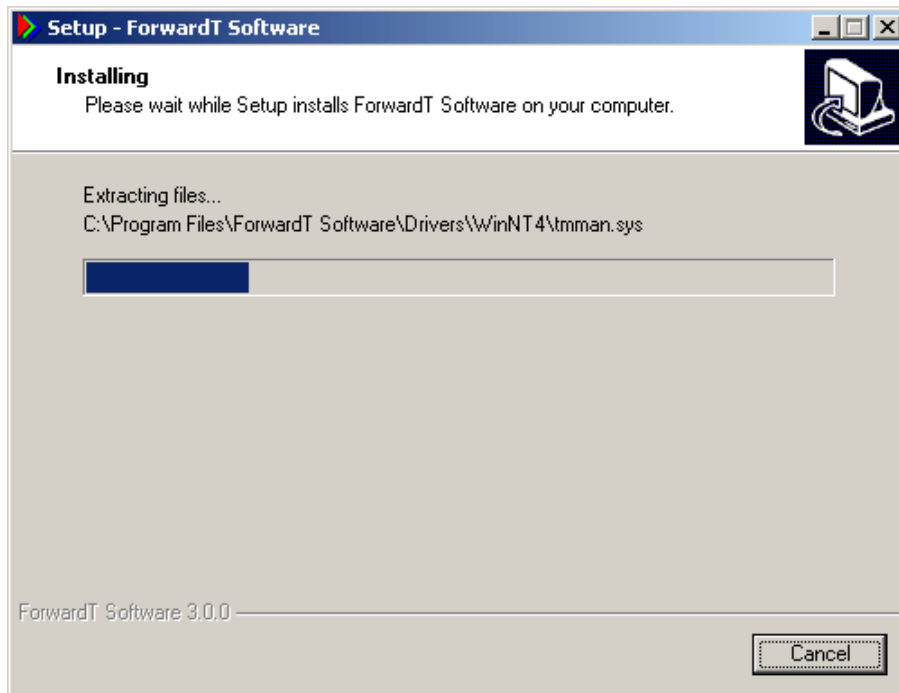


Figure 12. Copying files dialog

At the end of the data copying process, the system will find the new sound device connected to *FD300* board. The corresponding system message (Figure 13) will be displayed in which it is necessary to press button **Finish** for the further continuation of the installation process.

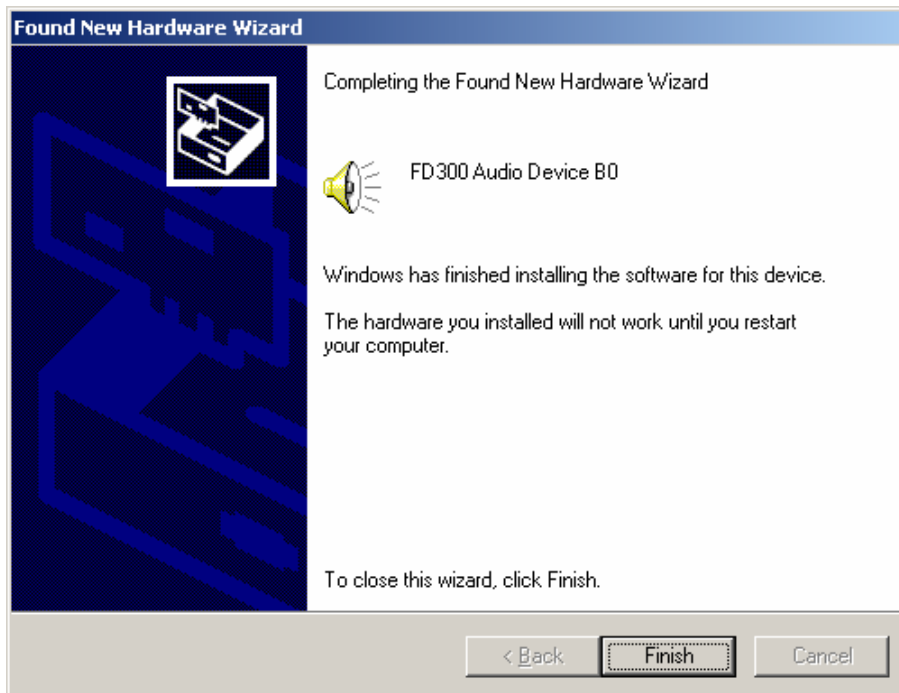



Figure 13. Found New Hardware Wizard dialog

The following system message (Figure 14) suggests restarting a computer after detection of the new sound device.

 *Attention! Do not press the **Yes** button in the message displayed in Figure 14, press the **No** button instead!*

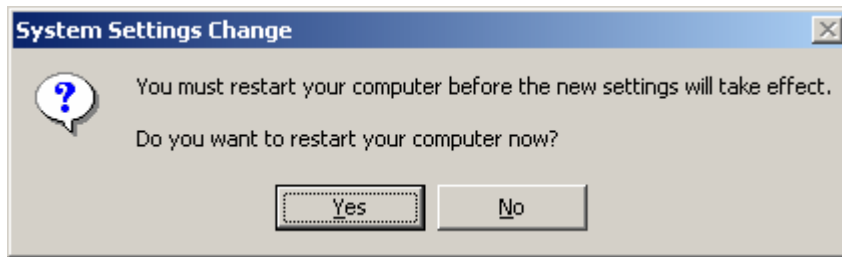


Figure 14. The system message about computer restart

After pressing button **No** dialog to restart the computer, the normal work components *ForwardT Software* (Figure 15) will open.

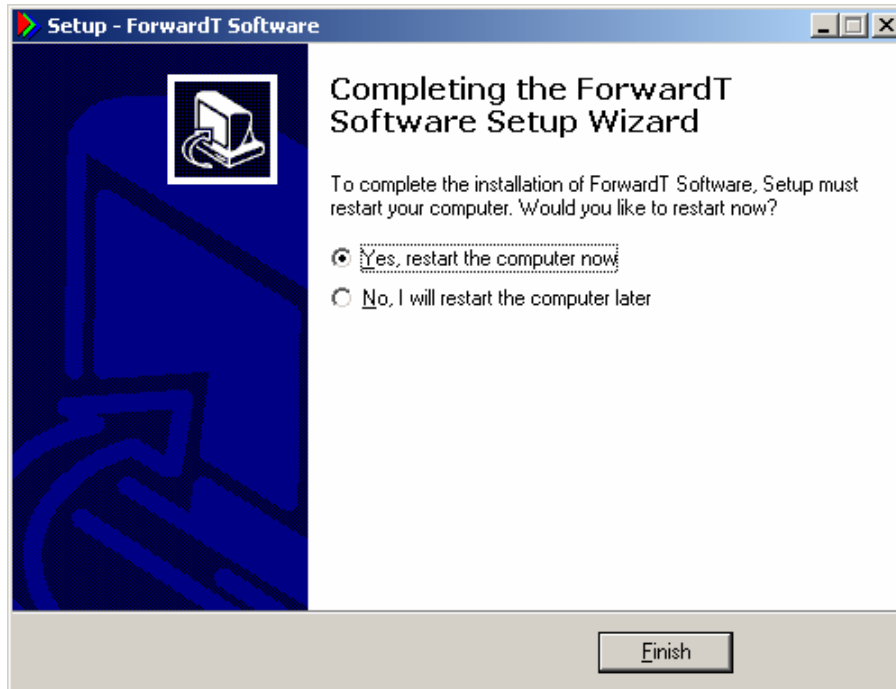



Figure 15. Completing *ForwardT* software dialog

 *When this dialog appears we strongly recommend choosing restart of your computer now. Otherwise we cannot guarantee the normal operation of the complex ForwardT Software applications!*

3 Features of installation under Windows XP

In this chapter features of *ForwardT Software* installation under operational system *Windows XP* are described.

During copying the data (Figure 12) system message *Software Installation* (Figure 16) will appear. In this window it is necessary to press button **Continue Anyway**.



Figure 16. *Software Installation* system message

After the operational system will find out the new sound device, dialog *Found New Hardware Wizard* (Figure 17) for its installation will appear.



Figure 17. The system message on finding of the new sound device

In this dialog it is necessary to set option **Install the software automatically (Recommended)** and to press button **Next**. The following installation dialog will open (Figure 18).

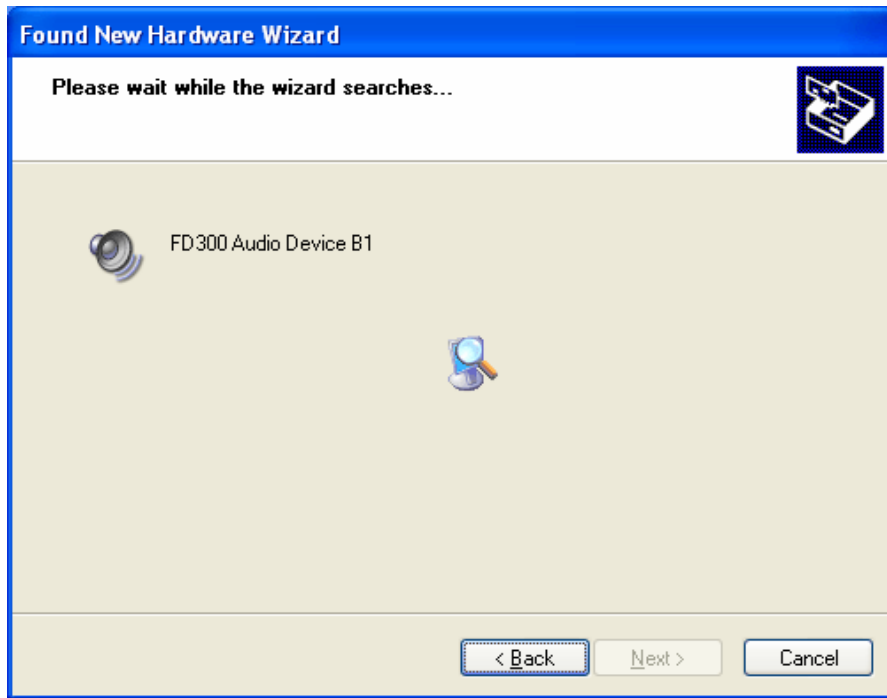


Figure 18. Sound device installation

During installation of the sound device system message *Hardware Installation* (Figure 19) will appear. In this window it is necessary to press button **Continue Anyway**.



Figure 19. Hardware Installation system message

After end of the new sound device installation dialog *Completing Found New Hardware Wizard* will open (Figure 20). In this window it is necessary to press button **Finish**.

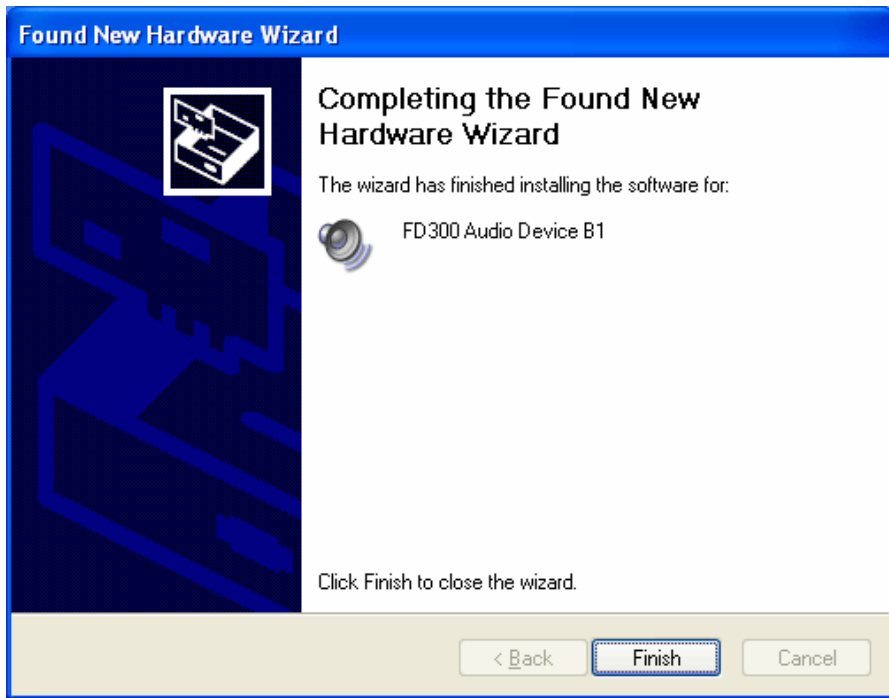


Figure 20. End of the sound device installation

The following dialog (Figure 21) suggests restarting a computer for normal work of *ForwardT Software* components.

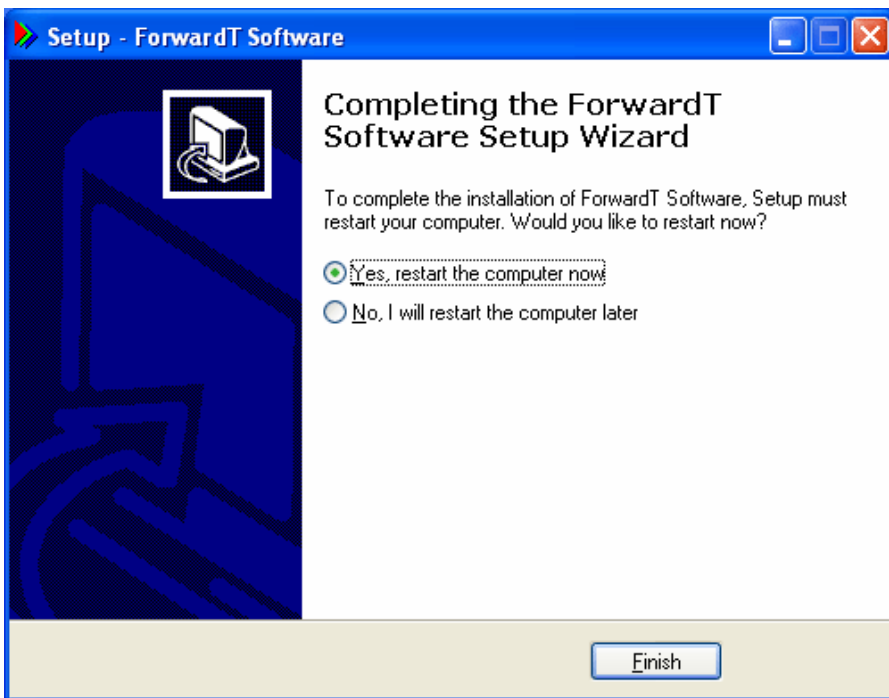


Figure 21. Completing *ForwardT* software dialog

*When this dialog appears we strongly recommend choosing restart of your computer now. Otherwise we cannot guarantee the normal operation of the complex *ForwardT Software* applications!*