

FDPostPlay



Configuration of Remote
Access via Network

*Revision as of
April 14, 2010*

Quick Start

Notice

The information in this document is subject to change without prior notice in order to improve reliability, design, or function and does not represent a commitment on the part of this company.

In no event will we be liable for direct, indirect, special, incidental, or consequential damages arising out of the use or the inability to use the product or documentation, even if advised of the possibility of such damages.

Copyright © 1997 - 2010 SoftLab-NSK Ltd.
All Rights Reserved.

No part of this reference manual may be reproduced or transmitted in any form or by any means without the prior written permission of this company.

Throughout this manual, we make reference to product names that are trademarks of other companies. We are using these names for identification purposes only, with no intention of infringement of the trademarks.

FCC Information

FCC ID:

This equipment has been tested and found to comply with the limits for a Class B digital device, pursuant to Part 15 of the FCC Rules. These limits are designed to provide reasonable protection against harmful interference in a residential installation. This equipment generates uses and can radiate radio frequency energy and, if not installed and used in accordance with the instructions, may cause harmful interference to radio communications. However, there is no guarantee that interference will not occur in a particular installation. If this equipment does cause harmful interference to radio or television reception, which can be determined by turning the equipment off and on, the user is encouraged to try to correct the interference by one or more of the following measures:

Reorient or relocate the receiving antenna.

Increase the separation between the equipment and receiver.

Connect the equipment into an outlet on a circuit different from that to which the receiver is connected.

Consult the dealer or an experienced radio/TV technician for help.

Shielded cables and I/O cards must be used for this equipment to comply with the relevant FCC regulations. Changes or modifications not expressly approved in writing by SoftLab-NSK Ltd. may void the user's authority to operate this equipment.

Limited Warranty

Our company warrants this product against defects in materials and workmanship for a period of one year from the date of purchase. During the warranty period, products determined by us to be defective in form or function will be repaired or replaced at our option, at no charge. This warranty does not apply if the product has been damaged by accident, abuse, misuse, or as a result of service or modification other than by us.

This warranty is in lieu of any other warranty expressed or implied. In no event shall we be held liable for incidental or consequential damages, such as lost revenue or lost business opportunities arising from the purchase of this product.



Table of Contents

Configuration of Remote Access in the FDPPostPlay System	3
1. General Information.....	3
2. Stop of Applications.....	4
3. Configuration of Network Connections	4
4. Configuration of Local Security Settings	5
5. Configuration of Windows Firewall Turning Off on Both PCs	6
6. Configuration of COM Security	9
7. User Permissions	11
8. Additional Information	17



Configuration of Remote Access in the FPostPlay System

1. General Information

Remote access via local network to the PostPlay system on another PC is necessary in the following cases:

- to input data into remote storage via the FPostPlay VideoIn application;
- to create and view clips in remote storage via the FPostPlay Preview application;
- to broadcast of clips on air from the remote storage via the FOnAir application.

User that launches a client application must have permission to access the PostPlay system on a remote PC in any of these cases.

Let the user with the USER1 name and some password logged in the system on a client PC. Register a user with the same name (USER1) and password to connect to the PostPlay system on a remote PC for the client application (FPostPlay VideoIn, FPostPlay Preview or FOnAir) launched by the user. It is better when this user is included either in the «Power users» or the «Administrators» groups on the remote PC. In other case he will not be authorized to launch PostPlay system services.




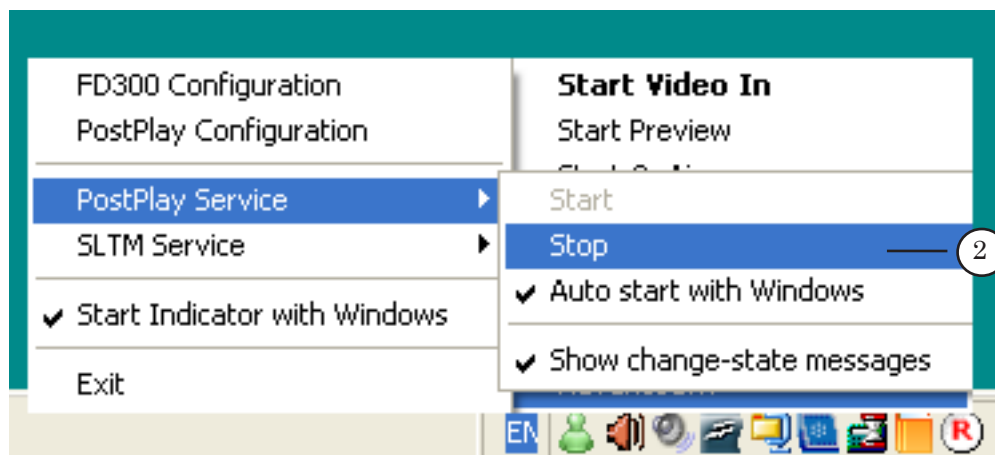
Tip: Apply either to administrator of the remote machine or to administrator of used network to register a user on remote PC and to include him into the group.

For more information on the FPostPlay system, see the "FPostPlay – Retransmitted signal delay server. User's Guide".



2. Stop of Applications

1. Close all active applications (FDPostPlay VideoIn, FDPostPlay Preview, OnAir) before configuration of remote access.
2. Stop the PostPlay server by activating the Advanced/Post-Play Service/Stop commands via the FDPostPlay Indicator application (see the  program icon in taskbar notification area). Confirm that you stop a work of the service.



3. Configuration of Network Connections

Check and configure network connections.

1. Be sure that network access among PCs works and PCs are in one workgroup.
2. Register the users («Administrators») with the same name and password on both machines. Log in using this name.

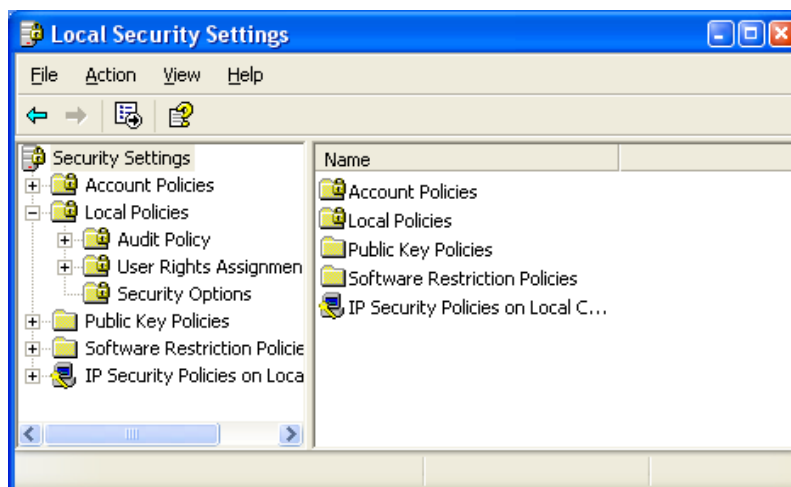
✓ **Important:** It is obligatory to request a password to log in the system.

Further configurations are implemented if the Windows XP SP 2 system is installed on PC.

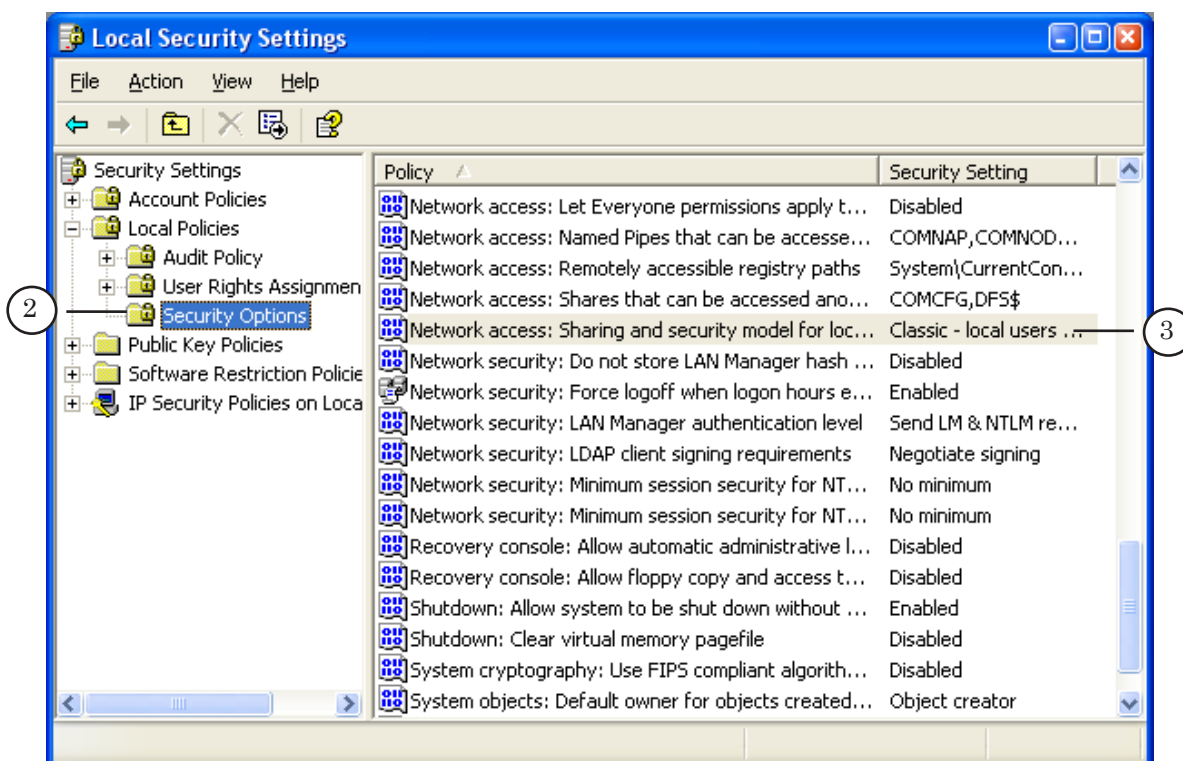


4. Configuration of Local Security Settings

1. Open Local Security Settings Window via Start: Control Panel > Administrative Tools > Local Security Policy.

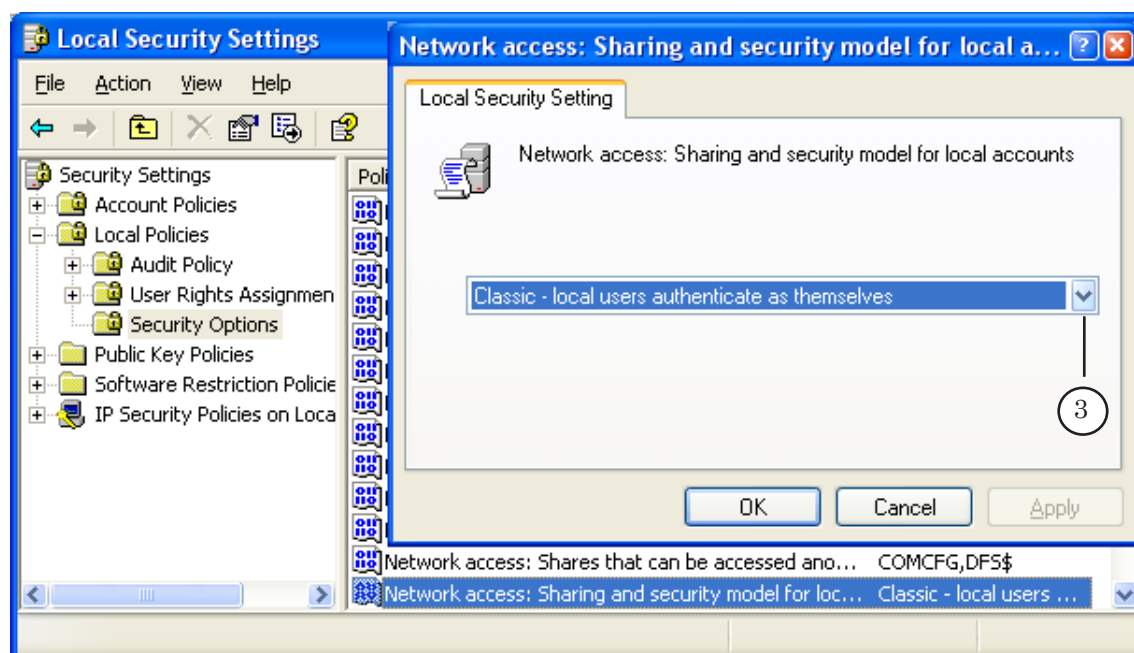


2. Open the Local Policies > Security Options folder in the Local Security Policy dialog window.
3. Select the Network access: Sharing and security model for local accounts policy in the list on the right.
4. Open the window with properties by double-clicking the policy.



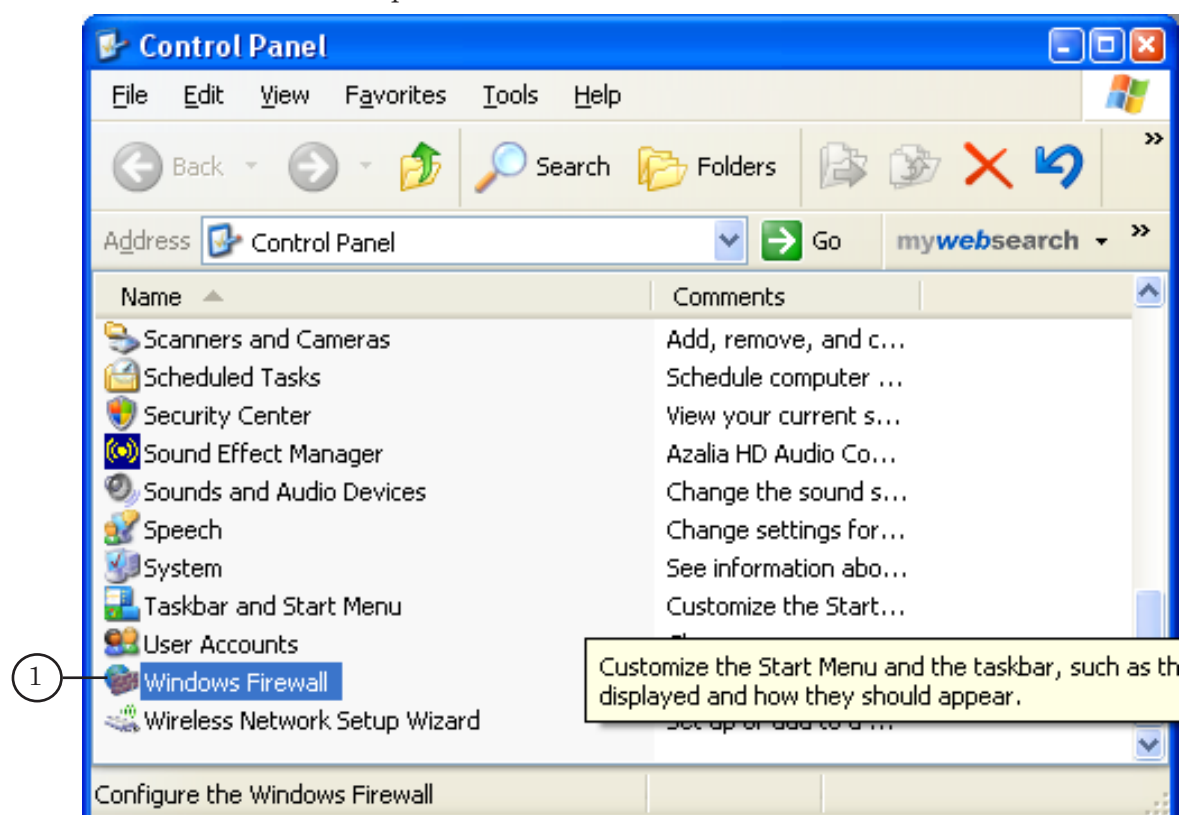


5. Select Classic - local users authenticate as themselves in the appeared window.



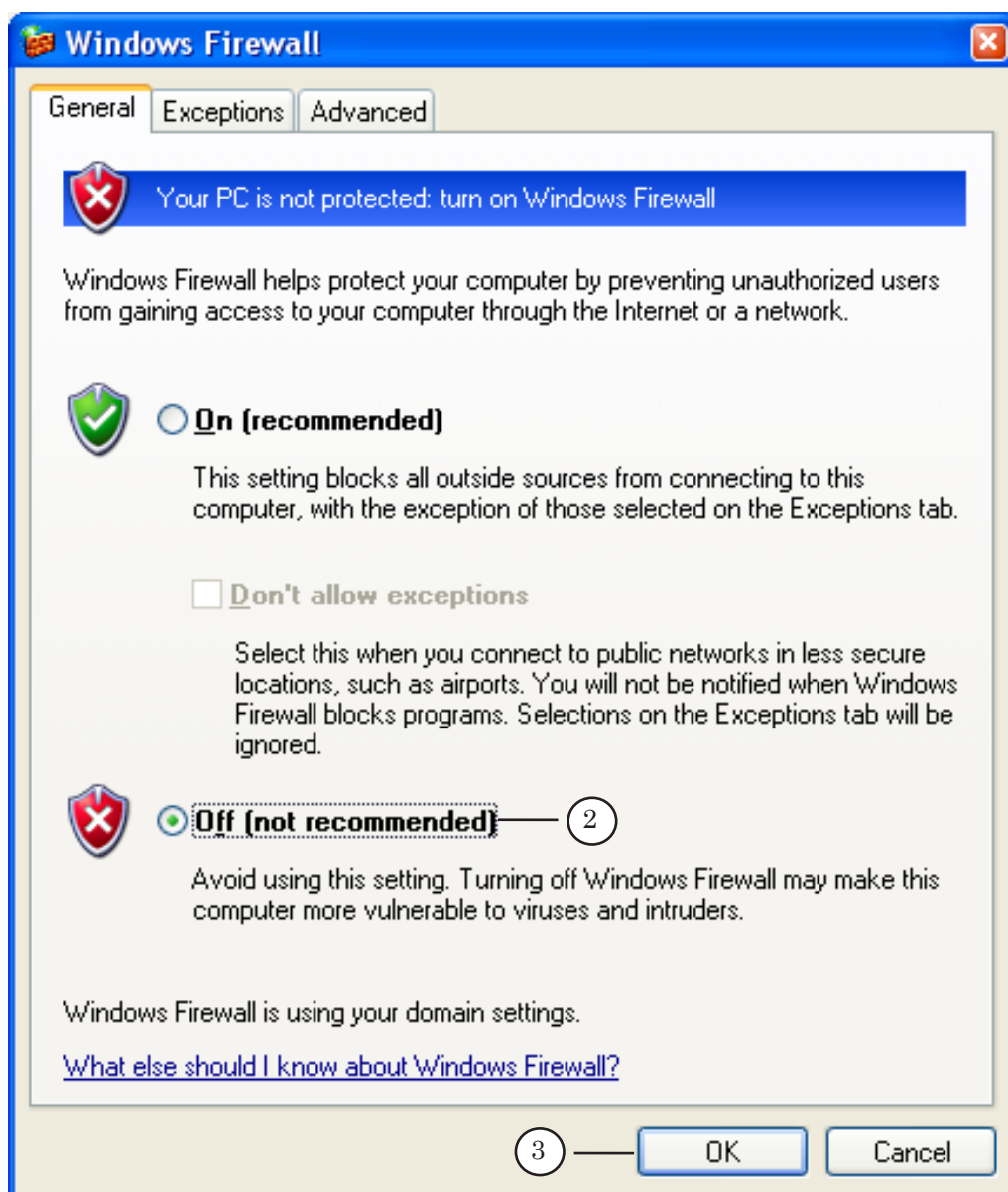
5. Turning Off Windows Firewall on Both PCs

1. Open the Start command: Control Panel > Windows Firewall.



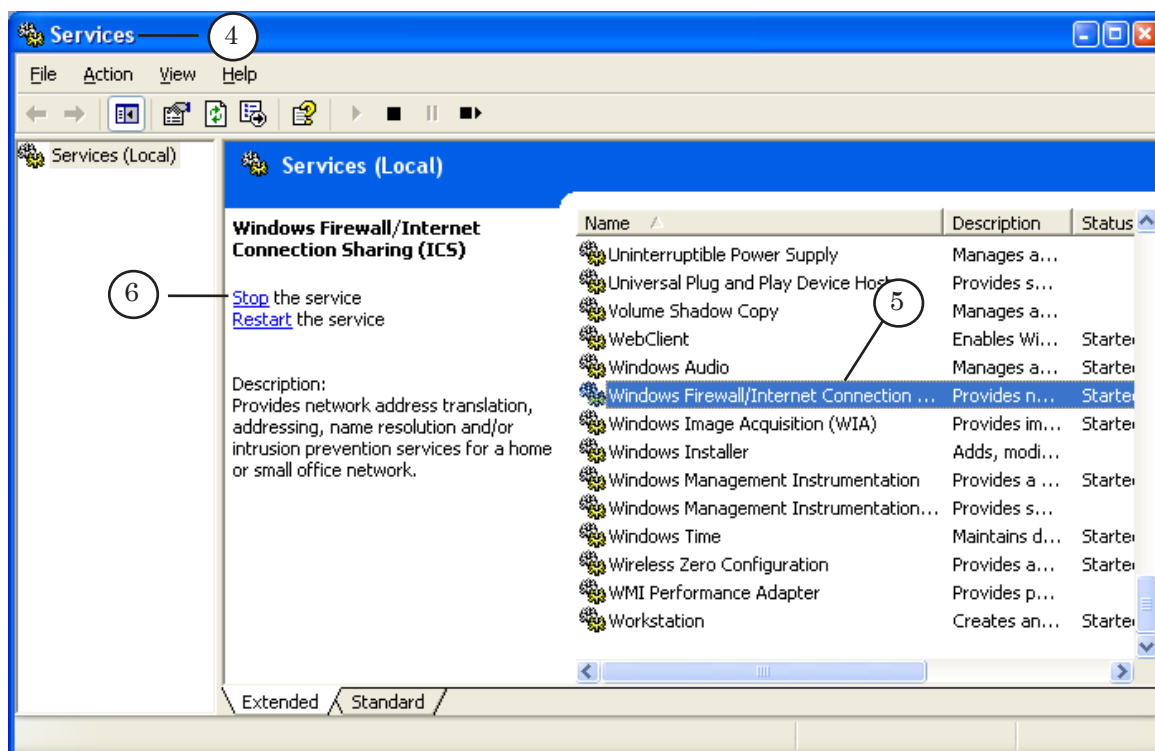


2. Select Off (not recommended).
3. Then click OK.





4. Stop Windows Firewall in the Windows XP services window. Open the Start command: Control Panel > Administrative Tools> Services.
5. Select the Windows Firewall/Internet Connection Sharing (ICS) service in the list on the right.
6. Click Stop.

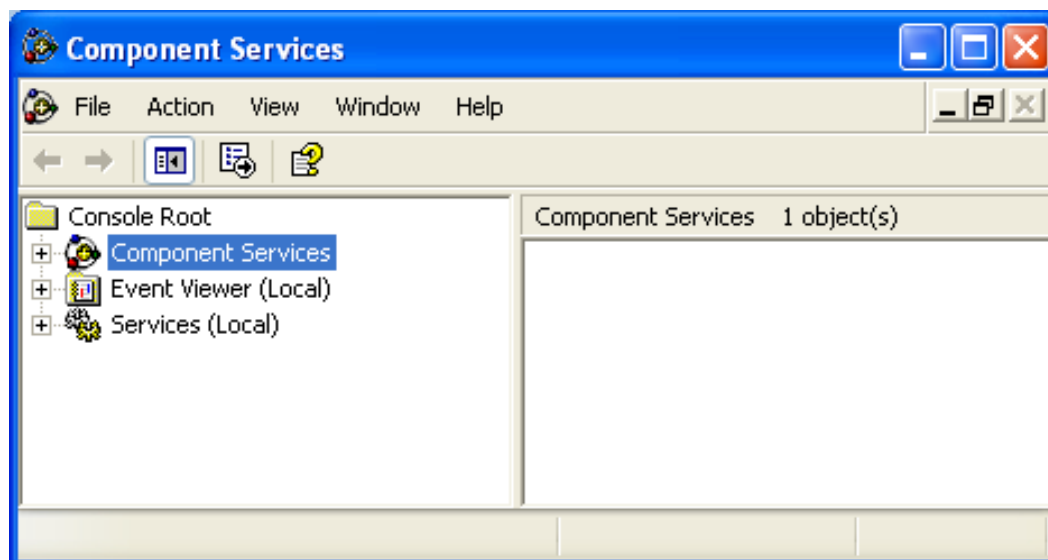


✓ **Important:** Firewall will be automatically loaded in the system and will be on when installing the SP2 updates for the Windows XP system. During subsequent system updates it will automatically be on.

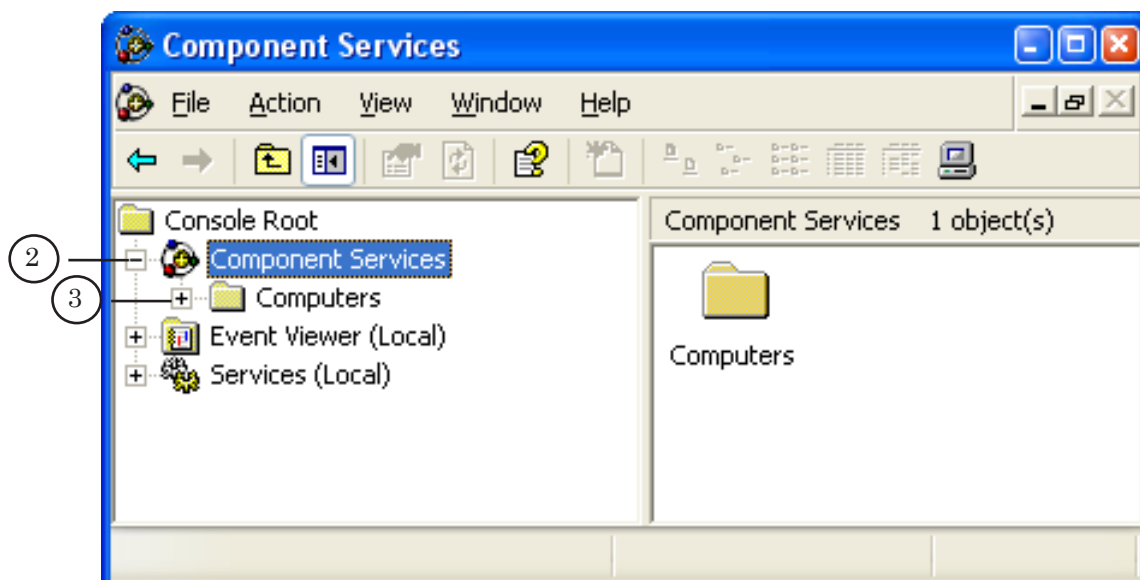


6. Configuration of COM Security

1. Open Component Services either via the Start command: Control Panel> Administrative Tools > Component Services or the dcomcnfg command line.

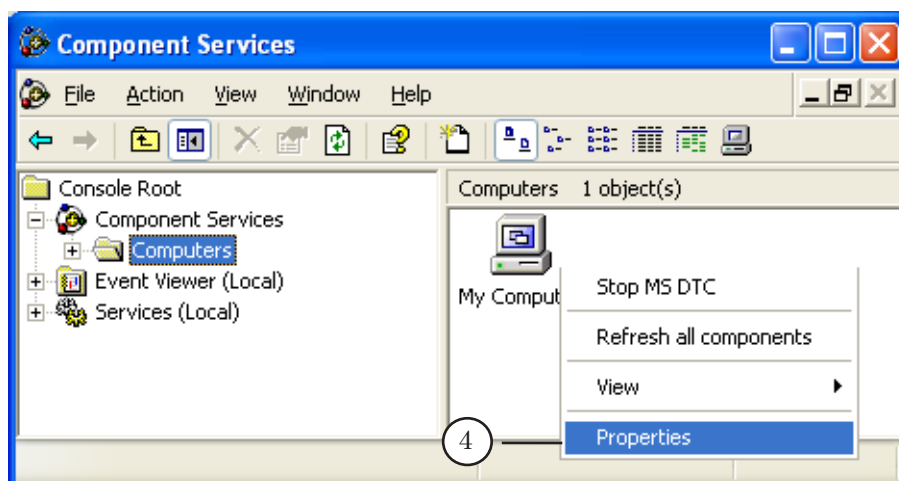


2. Open the Component Services folder.
3. Open the Computers folder or click the Computers folder located on the right.

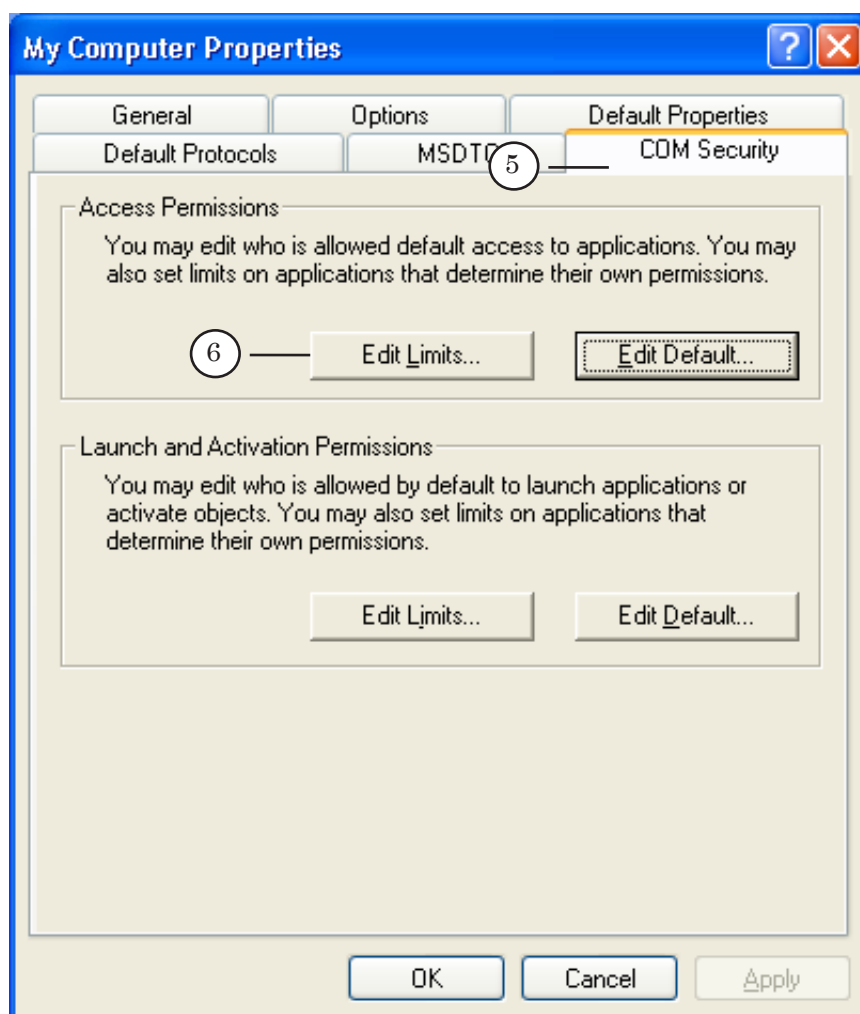




4. Open the Properties window by right-clicking My Computer.

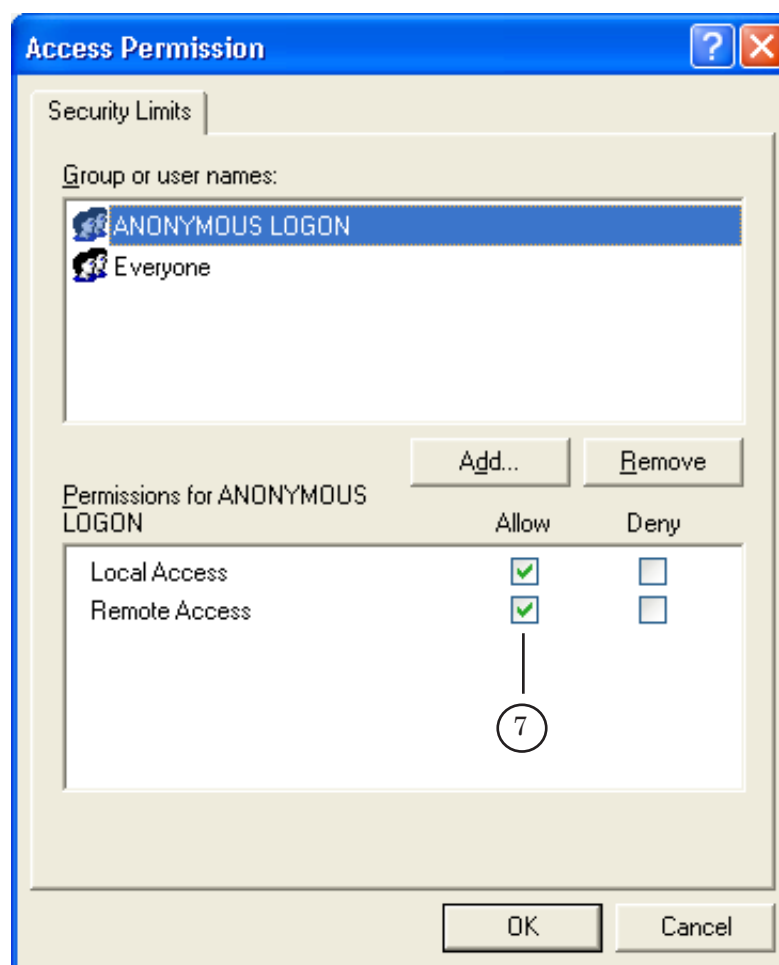


5. Allow remote access in the appeared window by selecting the COM Security tab.
6. Click Edit Limits... in the Access Permissions group.





- Put the Remote Access mark in the appeared window for Anonymous Logon and Everyone users, the Allow parameter.



7. User Permissions

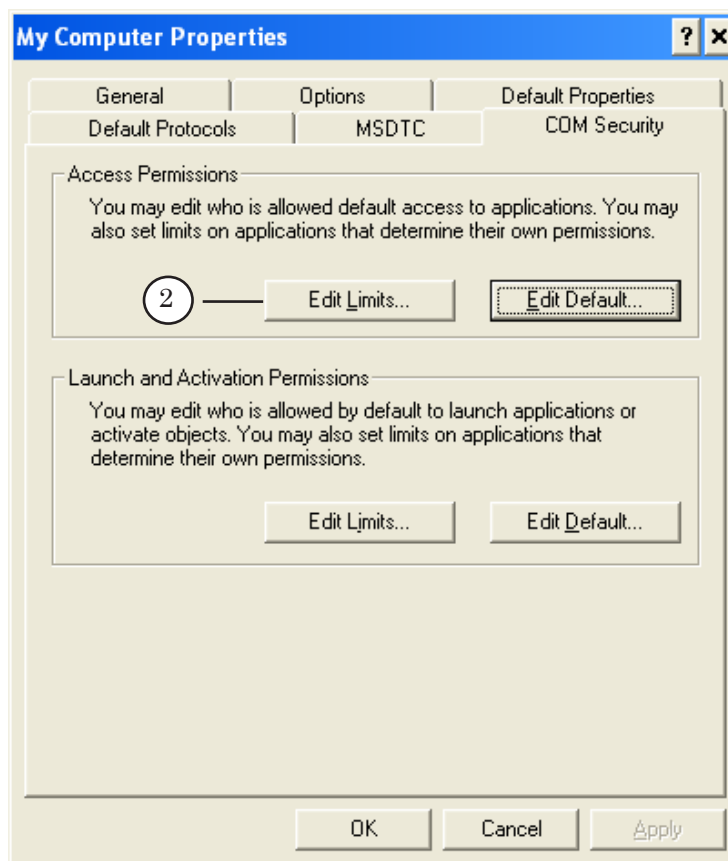
Users with the same name, password and administrative rights must be registered on both PCs.

Complete the following in the COM Security settings on PC with the PostPlay server if both registered users are not administrators:

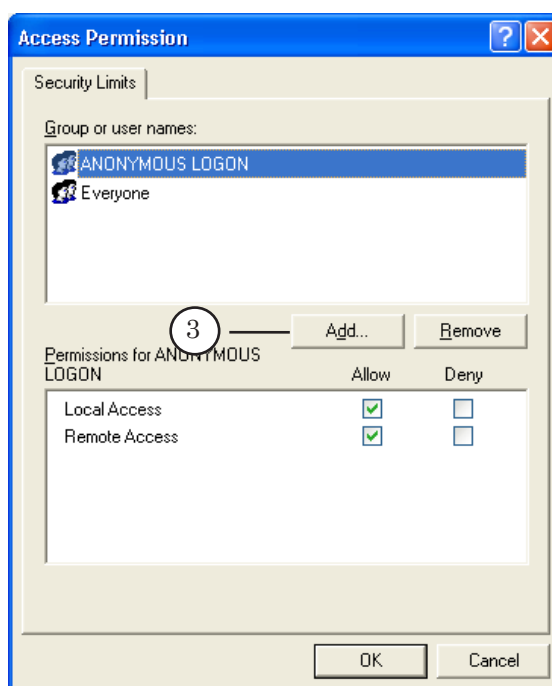
- Open the COM Security settings (see subsection 7 above, 1-6 points).



2. Click Edit Limits... in the Access Permissions group.

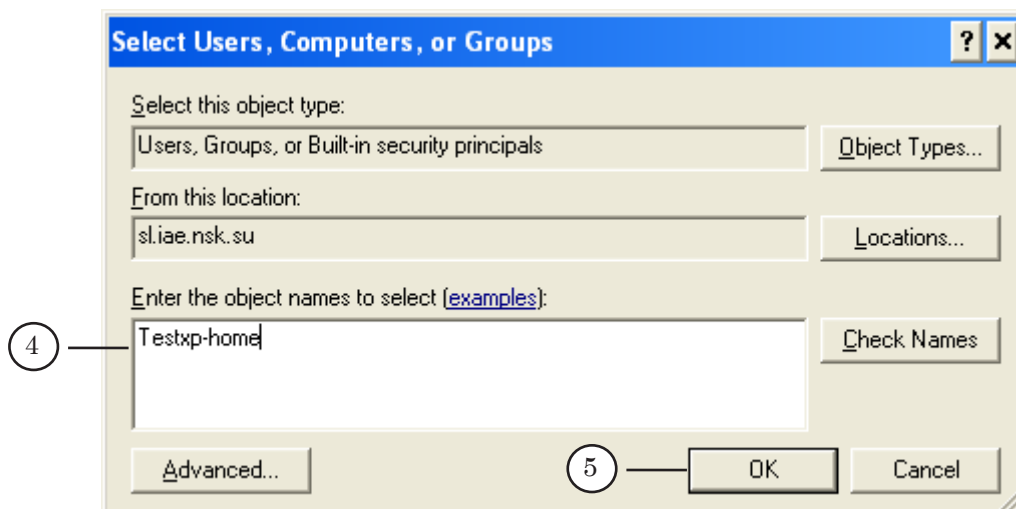


3. Add the user by clicking Add... in the Access Permissions dialog.

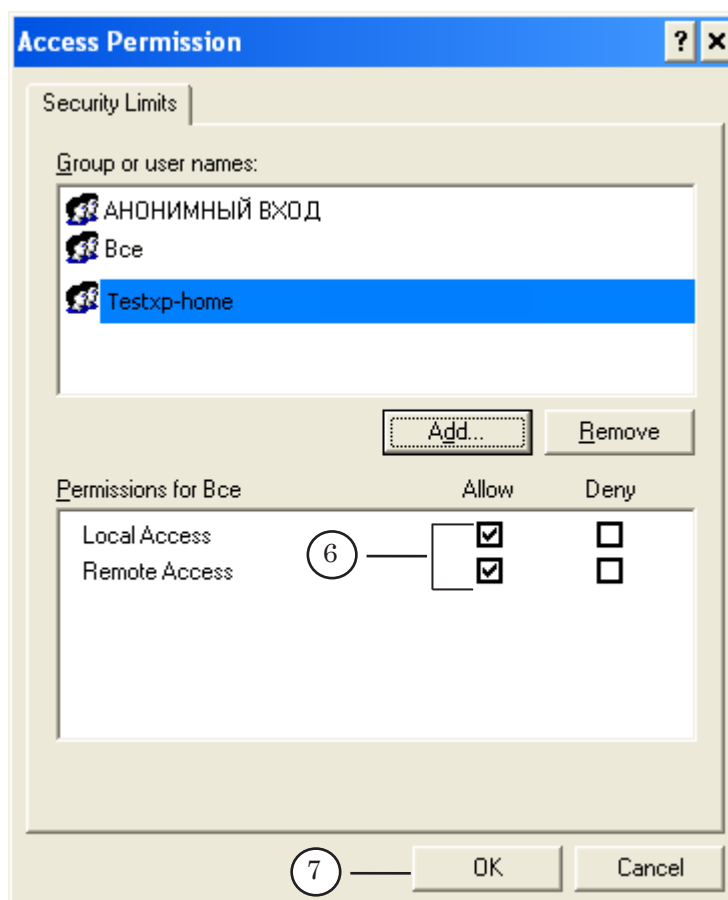




4. Select remote user name.
5. Click OK.

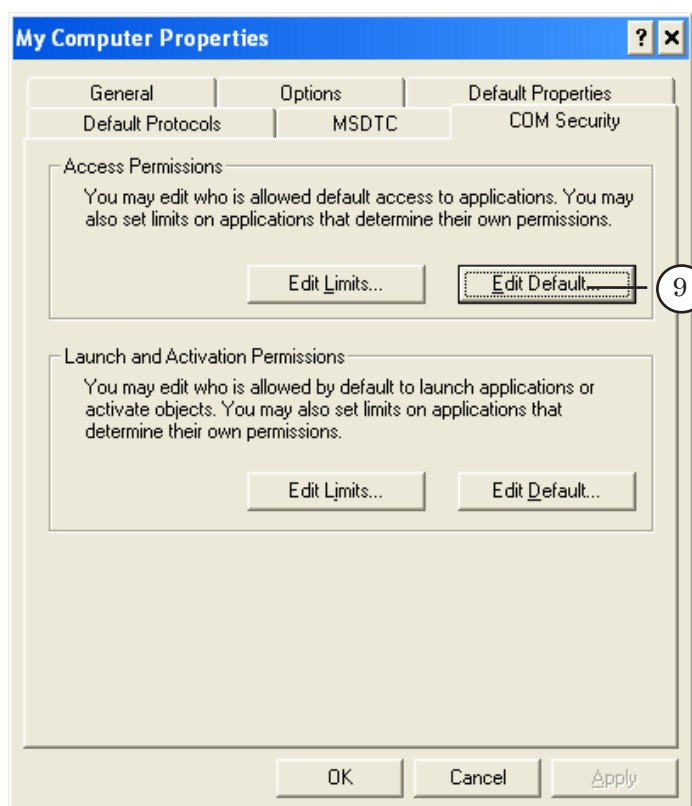


6. Allow remote and local accesses for the added user by setting the Local Access and Remote Access marks.
7. Click OK.

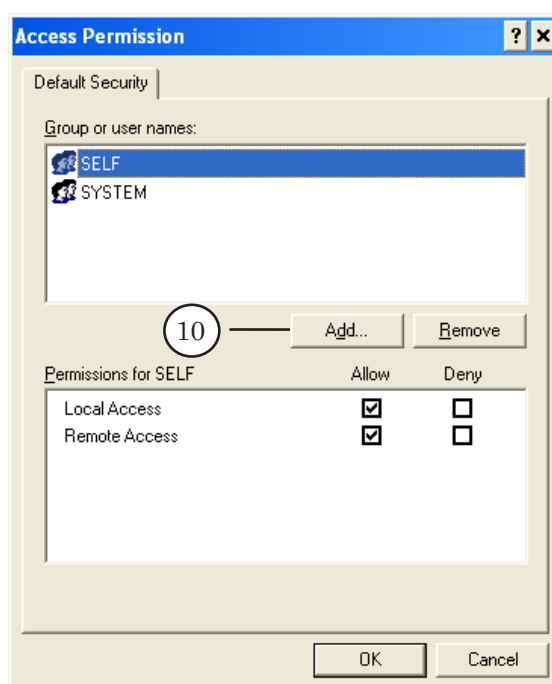




8. Open the COM Security settings (see above subsection 7, 1-6 items).
9. Click Edit Defaults... in the Access Permissions group.

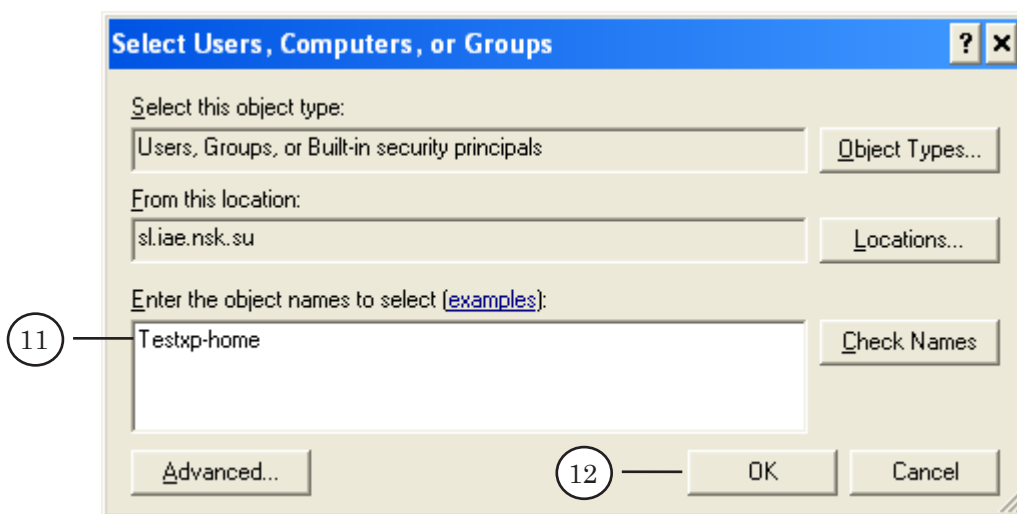


10. Add the user by clicking Add... in the Access Permissions dialog.

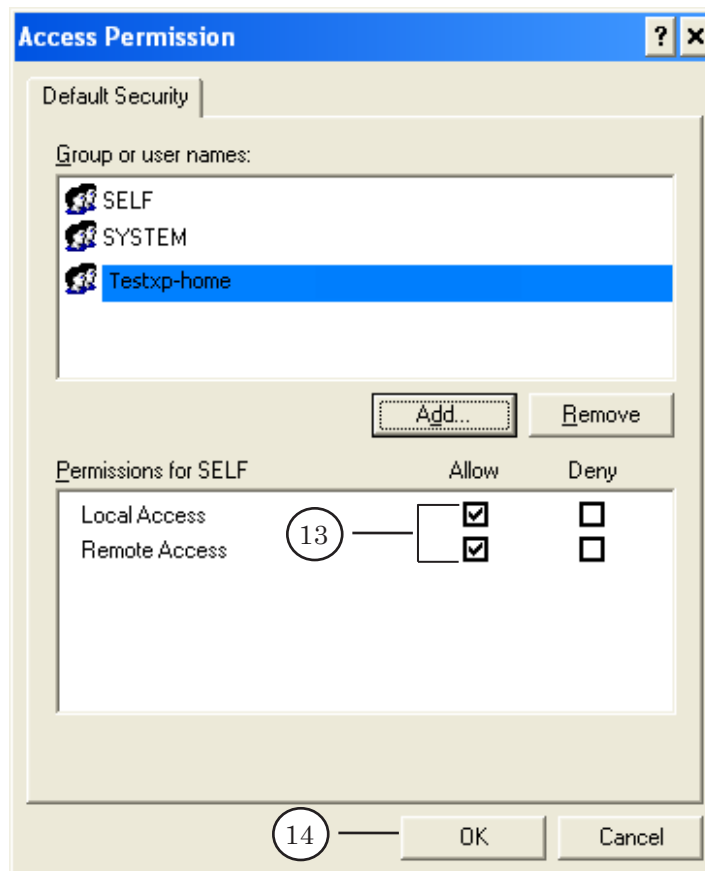




11. Select remote user name.
12. Click OK.

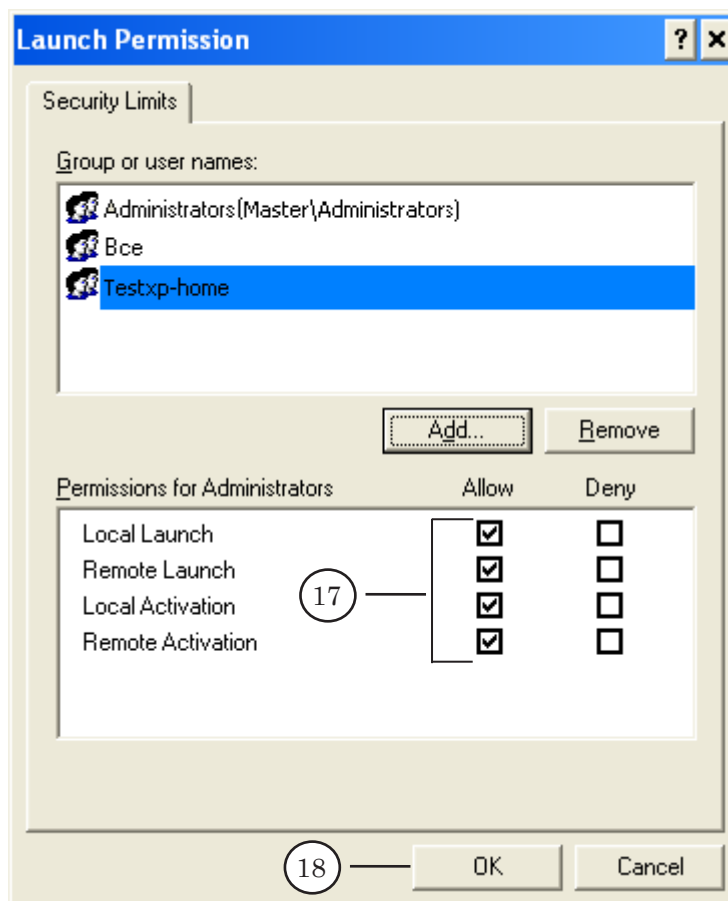


13. Allow remote and local accesses for the added user by setting the Local Access and Remote Access marks.
14. Click OK.





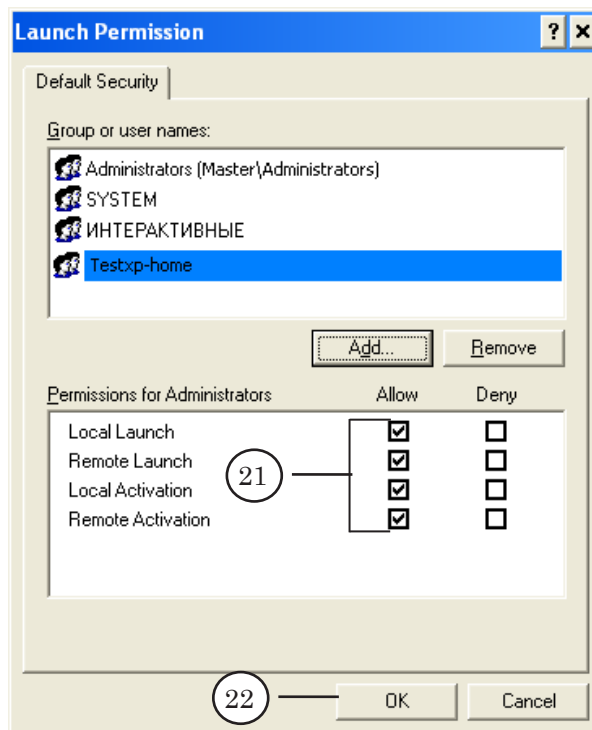
15. Click Edit Limits... in the Launch and Activation Permissions group.
16. Add the user in the same way (3-5 items).
17. Allow remote and local accesses for the added user by setting the Local Launch, Local Activation and Remote Access marks.
18. Click OK.



19. Click Edit Defaults in the Launch and Activation Permissions group.
20. Add the user in the same way (3-5 items).



21. Allow remote and local accesses for the added user by setting the Local Launch, Local Activation and Remote Access marks.
22. Click OK.



8. Additional Information

Reassign all calls to the PostPlay system to remote PC for the FDPostPlayVideoIn2 application to record data to remote storage. For this configure Distributed COM on client PC by indicating PC where server applications (PostPlay server) FragmentStorage and RPMServer work.

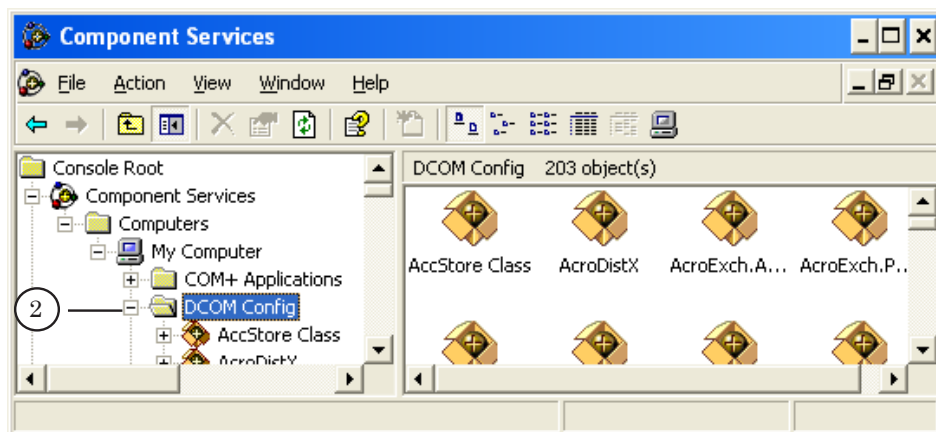
For Windows 2000.

1. Launch the Distributed COM application – dcomcnfg via the Start command > Run in the Open field by typing dcomcnfg and pressing Enter.
2. Specify the FragmentStorage service location. Open the Application tab and select the RPMFragmentStorage2s application in the list by clicking Properties. Select Location in appeared window. The option is selected by default. Switch the Run application on this computer option off. Then switch the Run application on the following computer option on. Enter network PC name in text field or select PC from network by clicking Browse.
3. Specify location of the RPMServer. Repeat actions described in point 2 for the given application.

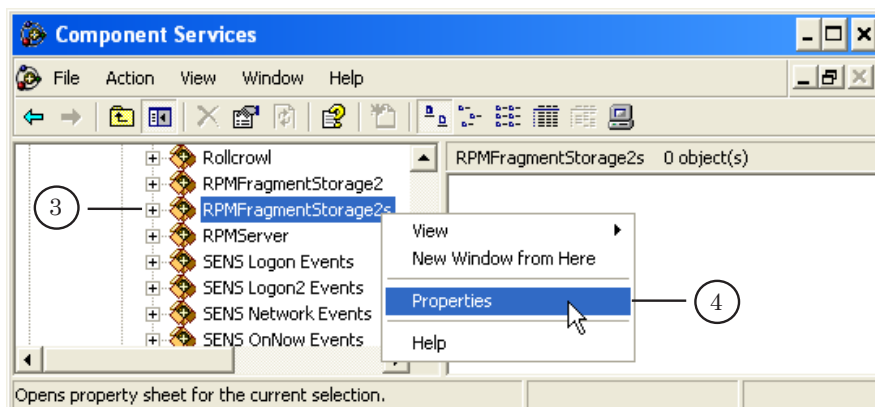


For Windows XP.

1. Launch the Component Services application via the Start command: Control Panel > Administrative Tools > Component Services.
2. Open the list of all PC system services via the Component Services > Computers > My Computer > DCOM Config items.



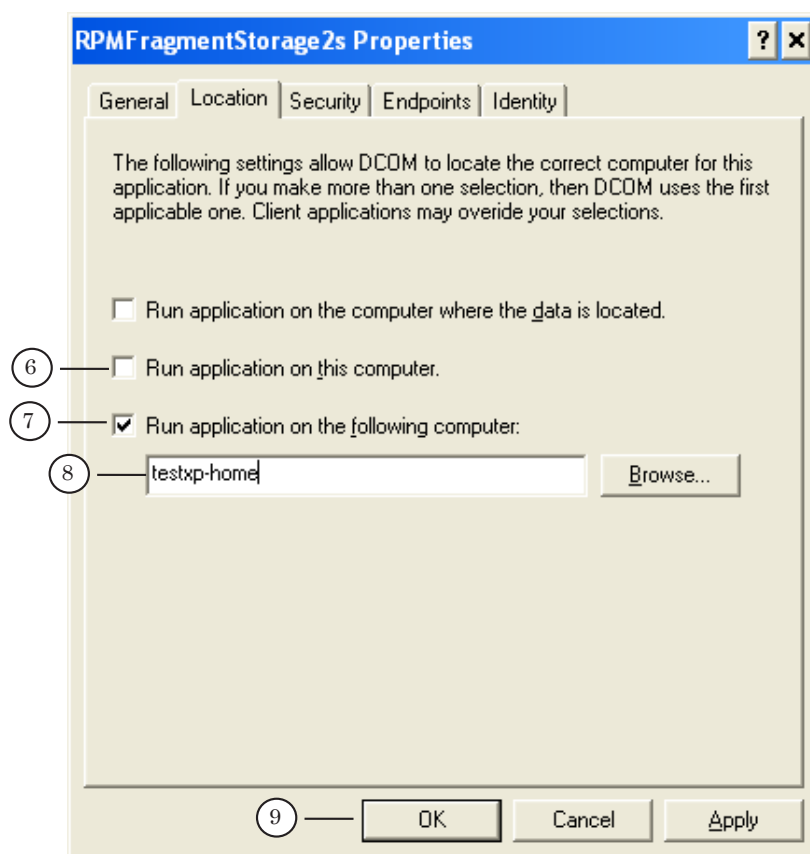
3. Specify location of the FragmentStorage system. Find the RPMFragmentStorage2s component in the list.
4. Open Properties in the context menu.



5. The RPMFragmentStorage2s Properties window appears. Select the Location tab.
6. Switch the Run application on this computer option off.
7. Switch the Run application on the following computer option on. After this a field for entering PC local name and the Browse button will be available. The button is used to open the window of search/selection of PC in local network.
8. Identify necessary PC.



9. Click OK.



10. Specify location of the RPMServer in the same way.



Useful Links

ForwardT Software set: description, download, documentation, solutions

<http://www.softlab-nsk.com/forward/index.html>

Support

e-mail: forward@sl.iae.nsk.su

forward@softlab-nsk.com

Forum

<http://www.softlab-nsk.com/forum>

Documentation for more information:

[FDPostPlay – Retransmitted Signal Delay Server. User's Guide.](#)

Translation from
1 December, 2010

© SoftLab-NSK
