

# RollCrawl Title element

Preparing for live broadcast



*Revision as of March 26, 2018*

Quick Start



---

## Notice

The information in this document is subject to change without prior notice in order to improve reliability, design, or function and does not represent a commitment on the part of this company.

In no event will we be liable for direct, indirect, special, incidental, or consequential damages arising out of the use or the inability to use the product or documentation, even if advised of the possibility of such damages.

Copyright © 1997–2018 SoftLab-NSK Co., Ltd.  
All Rights Reserved.

No part of this reference manual may be reproduced or transmitted in any form or by any means without the prior written permission of this company.

Throughout this manual, we make reference to product names that are trademarks of other companies. We are using these names for identification purposes only, with no intention of infringement of the trademarks.

## FCC Information

### FCC ID:

This equipment has been tested and found to comply with the limits for a Class B digital device, pursuant to Part 15 of the FCC Rules. These limits are designed to provide reasonable protection against harmful interference in a residential installation. This equipment generates uses and can radiate radio frequency energy and, if not installed and used in accordance with the instructions, may cause harmful interference to radio communications. However, there is no guarantee that interference will not occur in a particular installation. If this equipment does cause harmful interference to radio or television reception, which can be determined by turning the equipment off and on, the user is encouraged to try to correct the interference by one or more of the following measures:

Reorient or relocate the receiving antenna.

Increase the separation between the equipment and receiver.

Connect the equipment into an outlet on a circuit different from that to which the receiver is connected.

Consult the dealer or an experienced radio/TV technician for help.

Shielded cables and I/O cards must be used for this equipment to comply with the relevant FCC regulations. Changes or modifications not expressly approved in writing by SoftLab-NSK Co., Ltd. may void the user's authority to operate this equipment.

## Limited Warranty

Our company warrants this product against defects in materials and workmanship for a period of one year from the date of purchase. During the warranty period, products determined by us to be defective in form or function will be repaired or replaced at our option, at no charge. This warranty does not apply if the product has been damaged by accident, abuse, misuse, or as a result of service or modification other than by us.

This warranty is in lieu of any other warranty expressed or implied. In no event shall we be held liable for incidental or consequential damages, such as lost revenue or lost business opportunities arising from the purchase of this product.

---



---

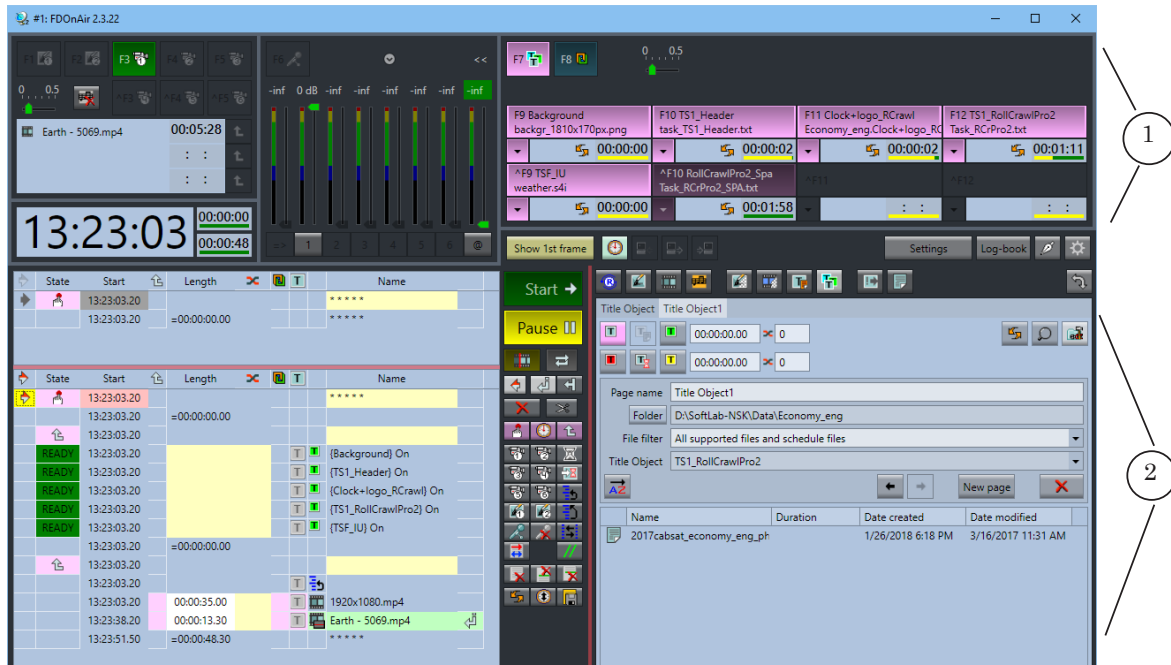
## Table of Contents

General Information .....	4
Loading a title project into FDO nAir.....	5
Assigning a control button to the Crawl line title object.....	8
Creating a file page for the Crawl line.....	9



## General Information

A crawl line is broadcast using the FDO nAir program.



You can control titles in FDO nAir using the following:

- interactive control buttons (1);
- the schedule. Lists of title objects and buttons for inserting commands into the schedule are located in the file pages of the title objects (2).

Preparing for live broadcasting a crawl line consists of the following:

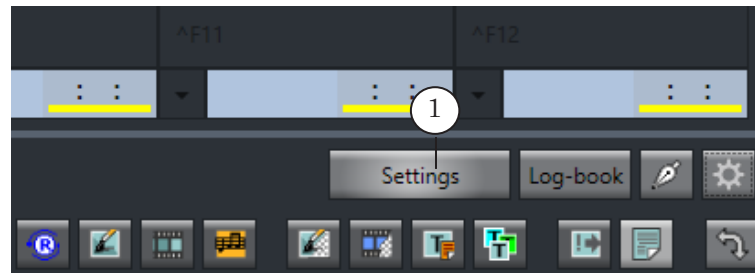
1. Loading the title project.
2. Assigning a control button to the RollCrawl title object.
3. Configuring the file page with tasks for the crawl line.



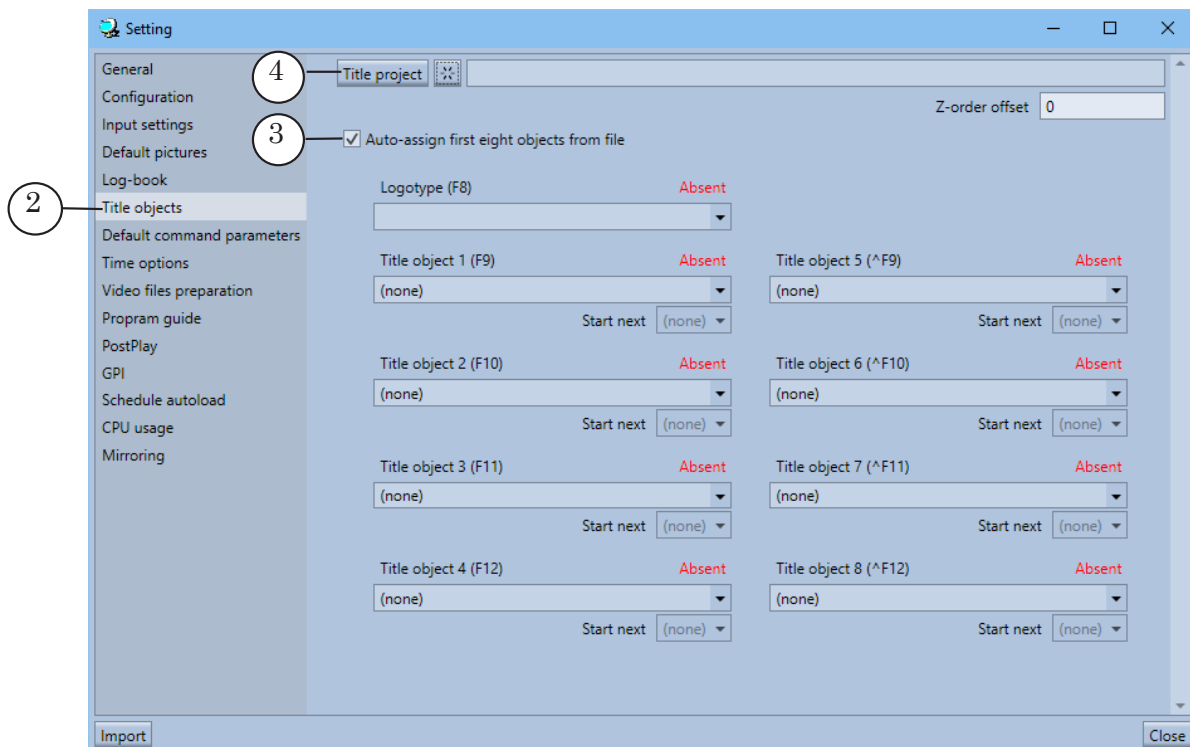
## Loading a title project into FDO nAir

A title project is created and configured in the FDTitleDesigner program. A project file has the SLTitleProj extension.

1. In the FDO nAir main window press Settings (1). The Setting window will open.



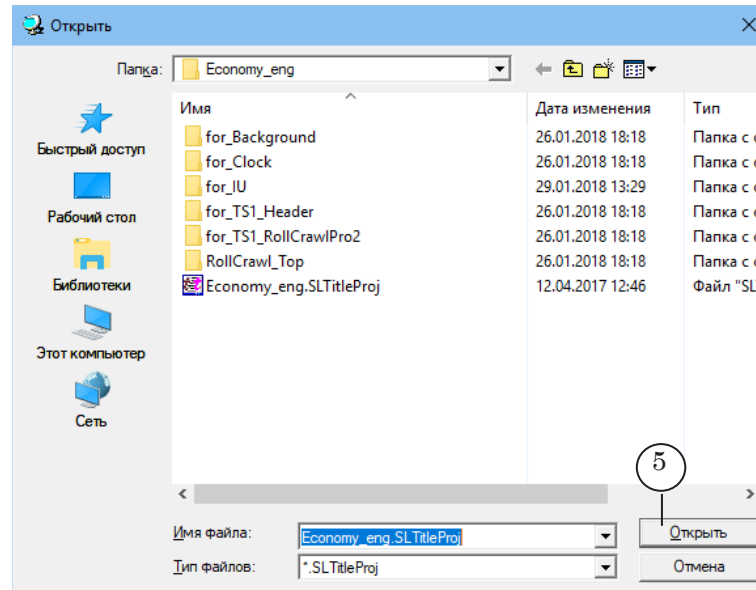
2. In the Setting window select the Title objects page (2).



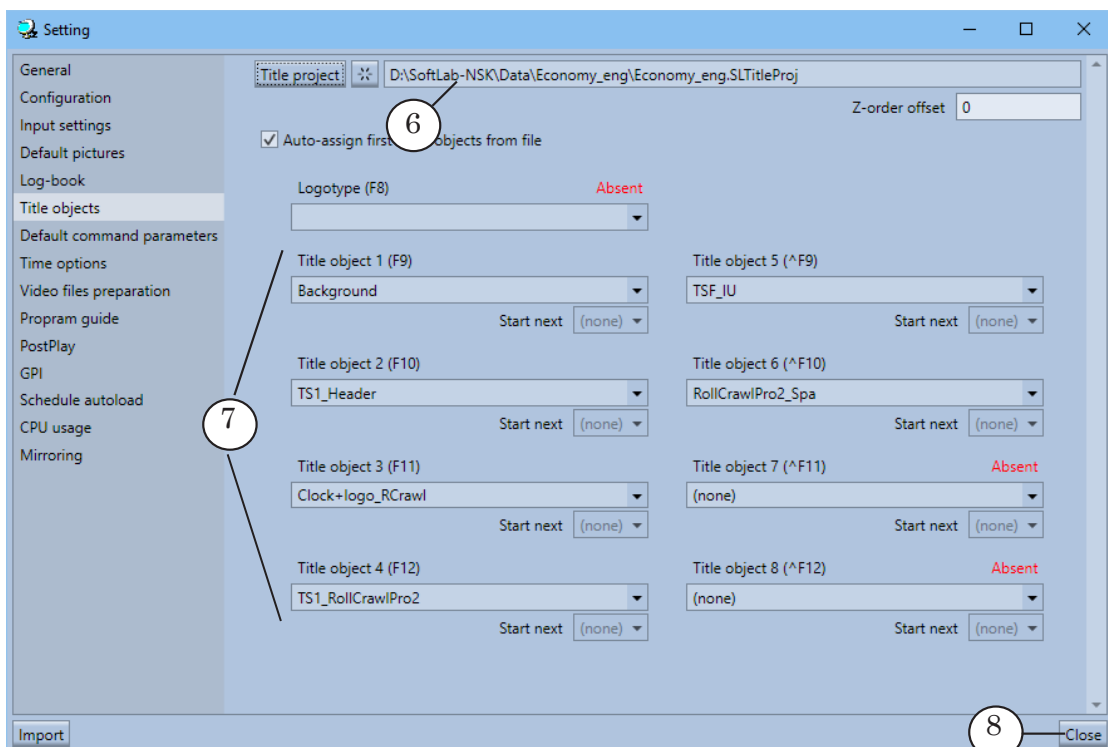
3. Flag the Auto-assign first eight objects from file option (3).
4. Press Title project (4).



5. In the opened window select the folder and name of the project file and press Open (5).



6. The full path to the project file will be displayed in the text field (6).
7. The title objects will automatically be assigned to the control buttons (7).
8. Close (8) the Setting window.





9. The control buttons (9) will display the corresponding object and task names.

9

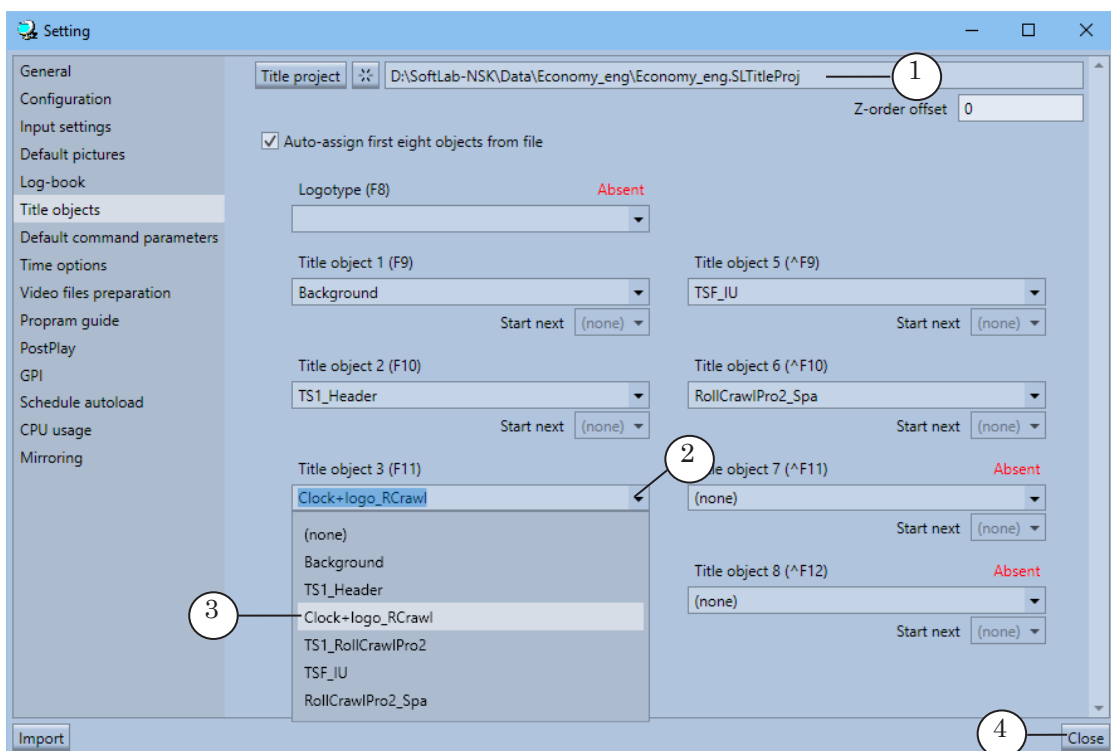
F7	F8	0 0.5 	
F9 Background backgr_1810x170px.png	F10 TS1_Header task_TS1_Header.txt	F11 Clock+logo_RCrwl Economy_eng.Clock+logo_RC	F12 TS1_RollCrawlPro2 Task_RCrPro2.txt
00:00:00	00:01:30	00:00:21	00:01:46
^F9 TSF_IU weather.s4i	^F10 RollCrawlPro2_Spa Task_RCrPro2_SPA.txt	^F11	^F12
00:00:00	00:01:54	: :	: :



## Assigning a control button to the Crawl line title object

You can change the assignment of the buttons between the title objects.

1. Make sure that the correct project is open (1).
2. Open the drop-down list (2) of the button.
3. Select the name of the object (3) you wish to assign to the button.
4. Repeat previous steps as necessary.
5. To apply changes and close the Setting window press Close (4).



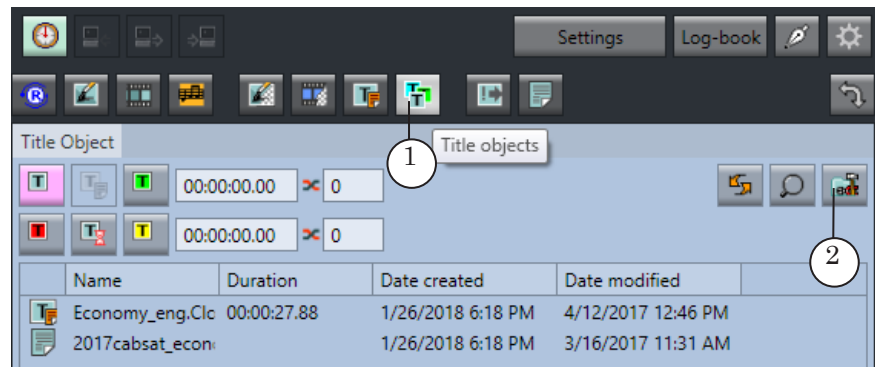




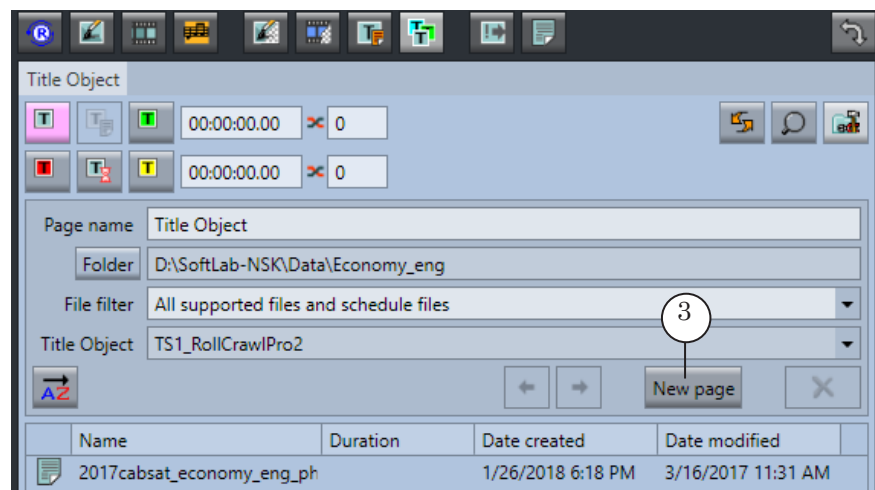
## Creating a file page for the Crawl line

To control each title element you can create a separate file page.

1. Go to the Title object file page: press Title objects (1).
2. Expand the page settings element group: on any tab press Customize (2).



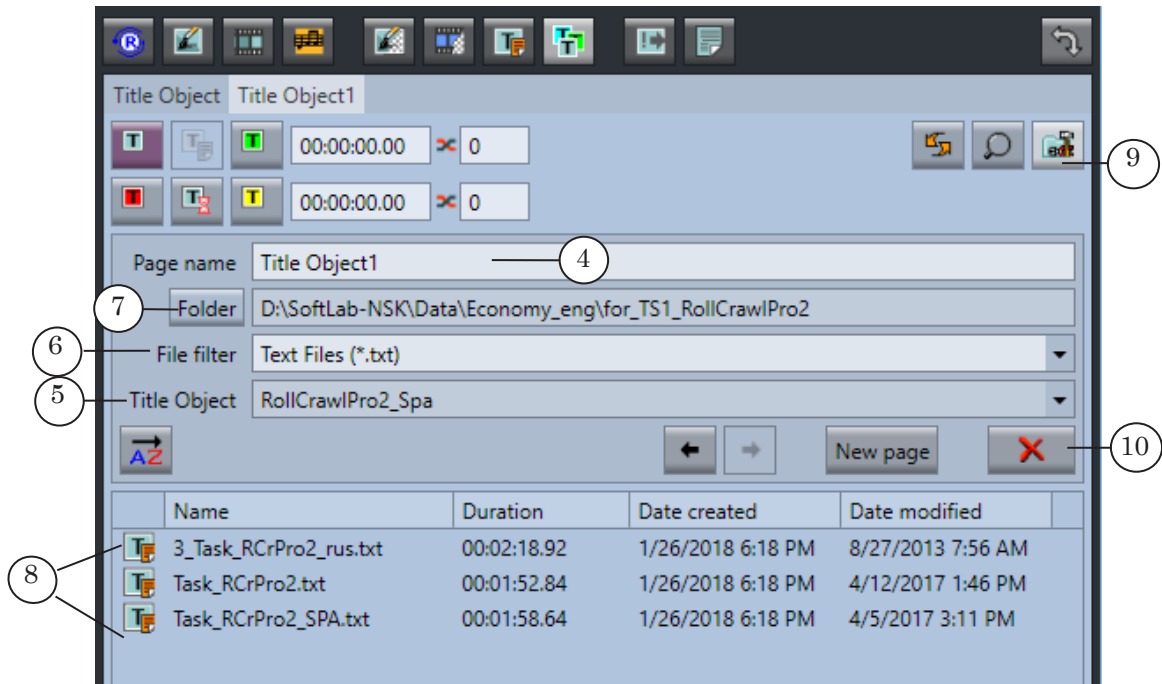
3. Press New page (3). A new file page will be created.



All further steps are completed in the new page.



4. Set the name of the file page in the Page name field (4). This name will be displayed in the title bar of the page.



5. Select the title object assigned to display the crawl line: in the Title object drop-down list (5) select the required title object.
6. Configure the file filter: in the File filter drop-down list (6) select the necessary types of task files. For the crawl line: \*.spt, \*.txt.
7. Specify the path to the folder with the task files: press Folder (7).
8. Using the standard dialog select the necessary folder and one of the files in it. Press Open.
9. The table will display a list of files (8) that are located in the selected folder and have the set extensions.
10. To minimize the page settings element group: on any tab press Customize (9).
11. To create a new page repeat steps 3–10.
12. You can delete a selected file page by pressing Delete page (10).



## Useful Links

### **Forward T Product Line: Description, Software Delivery, Documentation, Ready Solutions**

<http://softlab.tv/forward/index.html>

### **Tech Support**

e-mail: [forward@softlab.tv](mailto:forward@softlab.tv)

[forward@sl.iae.nsk.su](mailto:forward@sl.iae.nsk.su)

[forward@softlab-nsk.com](mailto:forward@softlab-nsk.com)

### **Forums**

<http://www.softlab-nsk.com/forum> (currently available in Russian only)