

SPTEditor

***The tasks editor for the
RollCrawl title element***

User's guide

Revision from 17 January 2006

ForwardT Software 3.9.0

SoftLab-NSK, Ltd.

Notice

The information in this document is subject to change without prior notice in order to improve reliability, design, or function and does not represent a commitment on the part of this company.

In no event will we be liable for direct, indirect, special, incidental, or consequential damages arising out of the use or the inability to use the product or documentation, even if advised of the possibility of such damages.

Copyright © 1997 - 2005 SoftLab-NSK, Ltd.
All Rights Reserved.

No part of this reference manual may be reproduced or transmitted in any form or by any means without the prior written permission of this company.

Throughout this manual, we make reference to product names that are trademarks of other companies. We are using these names for identification purposes only, with no intention of infringement of the trademarks.

FCC Information

FCC ID:

This equipment has been tested and found to comply with the limits for a Class B digital device, pursuant to Part 15 of the FCC Rules. These limits are designed to provide reasonable protection against harmful interference in a residential installation. This equipment generates uses and can radiate radio frequency energy and, if not installed and used in accordance with the instructions, may cause harmful interference to radio communications. However, there is no guarantee that interference will not occur in a particular installation. If this equipment does cause harmful interference to radio or television reception, which can be determined by turning the equipment off and on, the user is encouraged to try to correct the interference by one or more of the following measures:

- Reorient or relocate the receiving antenna.
- Increase the separation between the equipment and receiver.
- Connect the equipment into an outlet on a circuit different from that to which the receiver is connected.
- Consult the dealer or an experienced radio/TV technician for help.

Shielded cables and I/O cards must be used for this equipment to comply with the relevant FCC regulations. Changes or modifications not expressly approved in writing by SoftLab-NSK, Ltd. may void the user's authority to operate this equipment.

Limited Warranty

Our company warrants this product against defects in materials and workmanship for a period of one year from the date of purchase. During the warranty period, products determined by us to be defective in form or function will be repaired or replaced at our option, at no charge. This warranty does not apply if the product has been damaged by accident, abuse, misuse, or as a result of service or modification other than by us.

This warranty is in lieu of any other warranty expressed or implied. In no event shall we be held liable for incidental or consequential damages, such as lost revenue or lost business opportunities arising from the purchase of this product.

Table of contents

1	INTRODUCTION	4
2	THE APPLICATION MAIN WINDOW	5
3	SPT FILE	6
3.1	Creating a new SPT file	6
3.2	Opening an existing SPT file	6
3.3	Saving an SPT file	7
4	SPT FILE FORMAT	9
5	GRAPHICS FILES LIST.....	10
5.1	Adding files.....	10
5.2	File replacement	10
5.3	Changing the sequence of graphics files.....	11
5.4	Deleting files	11
5.5	Selecting all files	11
5.6	Duplicating files.....	11
5.7	Editing the Task list with the keyboard and a contextual menu	11
6	PREVIEW WINDOW.....	12
7	PROGRAM SETTINGS.....	13
8	TEXT IMPORT.....	14
8.1	Text file format.....	14
8.2	Region format.....	14
8.3	<i>Import Text File</i> dialog	14
9	RUNNING THE APPLICATION FROM THE COMMAND LINE	16
10	USAGE OF THE APPLICATION.....	17
10.1	Program settings adjustment	17
10.2	Choosing a task file.....	18
10.3	Making a graphics files list.....	18
10.4	Text import	18
10.5	Saving a task file	19

1 Introduction

The *ForwardT* software gives a user an opportunity to use a wide variety of title elements: the **Caption**, **Clock**, **AnimLogo**, **Picture**, **MovieList** etc. The **RollCrawl** is one of these title elements. It is a rectangular scrolling region displaying a sequence of pictures moving across the screen in a certain direction with the fixed speed. (For more details about the **RollCrawl**, see the *FDTitle Designer* application User's guide.)

The task for **RollCrawl** is an SPT file. It is a text file with a sequence of lines, each of them containing a path to a graphics file (*.tga; *.png; *.bmp; *.dib; *.jpg).

The *SPTEditor* application is designed for creating, editing and previewing SPT files.

2 The application main window

The main window of the *SPTEditor* is shown on Fig. 1. There are the following groups of controls: **SPT File** (for operations with an SPT file), **Task List** (for a task list editing), the preview window and the **Settings...** button (for adjusting the application settings).

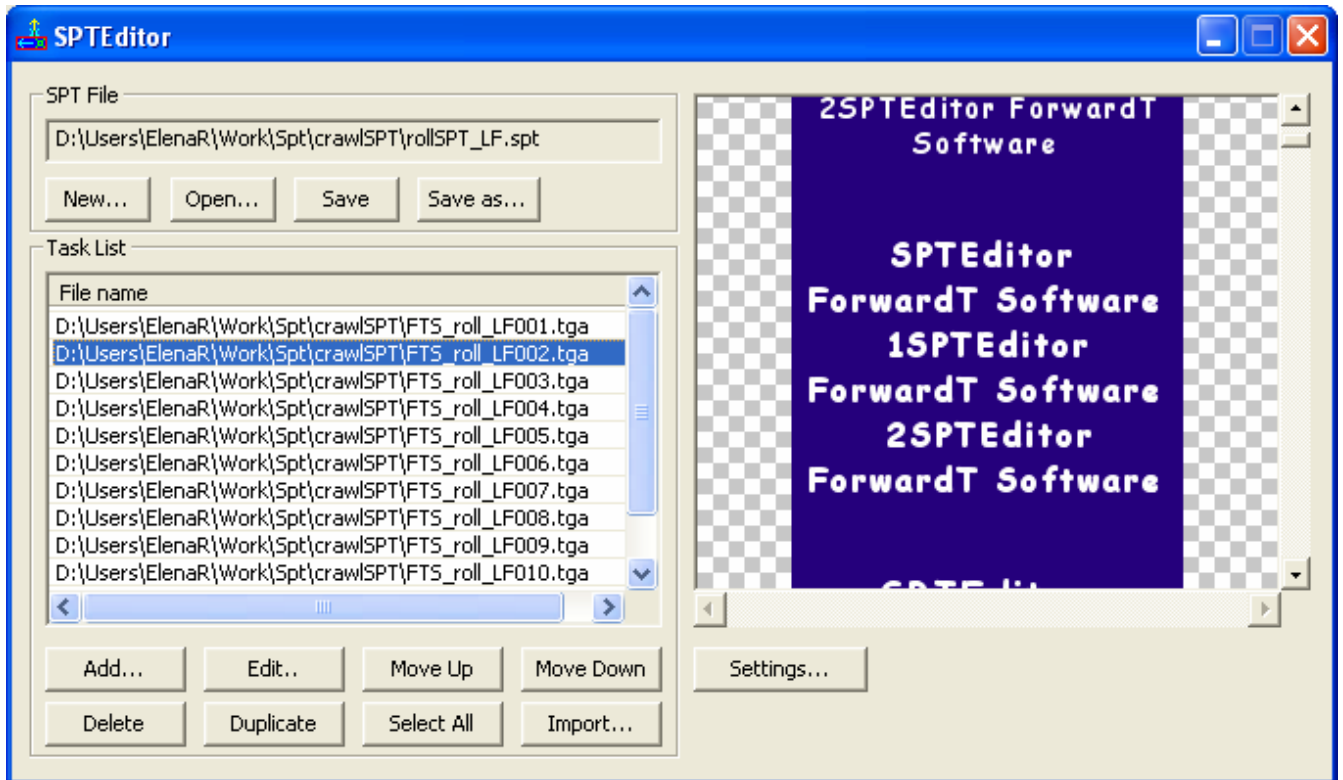


Fig. 1. Main window

The **SPT File** group contains a field with the full path to an SPT file and buttons to create, open and save an SPT file: **New...**, **Open...**, **Save**, **Save as...** (Fig. 1).

The **Task List** group contains a list of graphics files and a block of buttons for its editing: **Add...**, **Edit...**, **Move Up**, **Move Down**, **Delete**, **Duplicate**, **Select All**, **Import...** (this button adds new graphics files using the text import procedure).

The preview window displays the appearance of the **RollCrawl** task being processed.

*It is necessary to select the direction of the **RollCrawl** according to its type so that an SPT file could be properly displayed in the preview window. Use the **Direction** selector (see section 7).*

3 SPT file

The **SPT File** group contains a text field with a file full path and a block of buttons for operations with a file (Fig. 2).

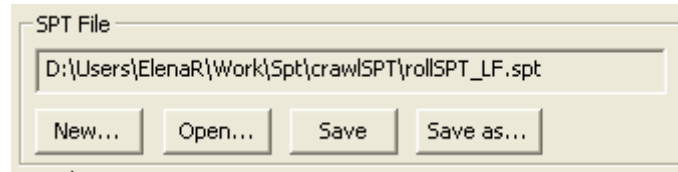


Fig. 2. SPT File group

3.1 Creating a new SPT file

The **New...** button is used for creating a new SPT file. Pressing this button opens a *New SPT File* dialog, where in the *File name* text field a new SPT file name is specified and a folder to place the file is selected (Fig. 3).

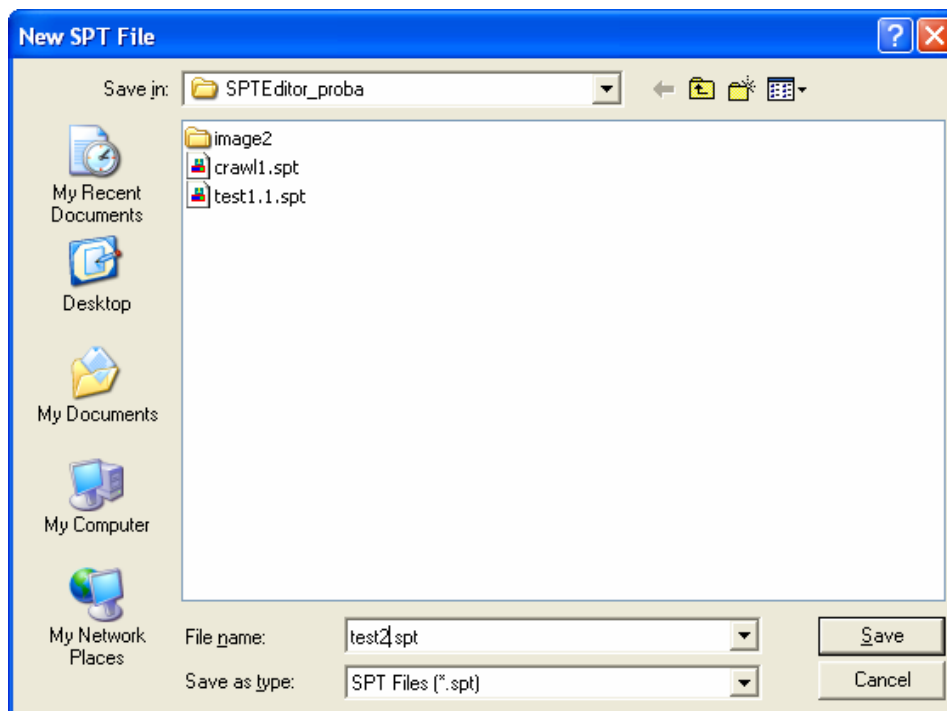


Fig. 3. New SPT File dialog

3.2 Opening an existing SPT file

The **Open...** button is used for opening an existing SPT file. In the *Open SPT File* dialog the required SPT file is selected from a list (Fig. 4).

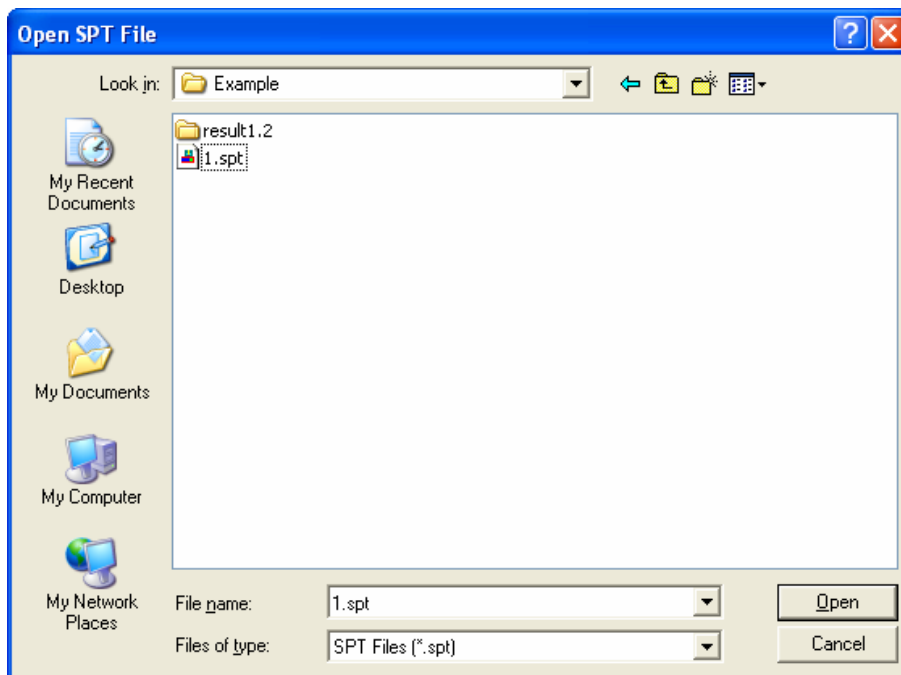


Fig. 4. Open SPT File dialog

If some graphics files for the current task were not found, you will be asked to confirm proceeding opening an SPT file without them (Fig. 5).

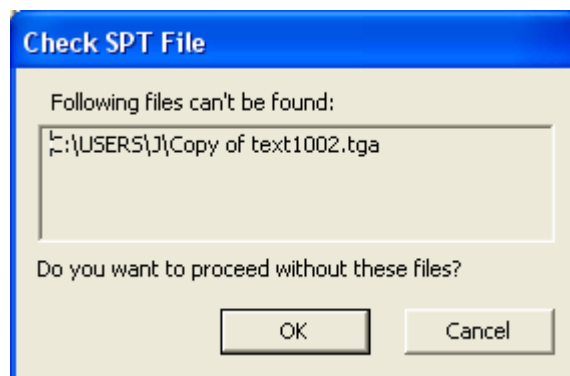


Fig. 5. Confirmation for opening an SPT file with some graphics files absent

3.3 Saving an SPT file

The **Save** button is used for saving changes in the current file. The **Save as...** button is used for saving an existing SPT file with a new name. Pressing this button opens a *Save as* dialog where a new file name and a folder are specified (Fig. 6).

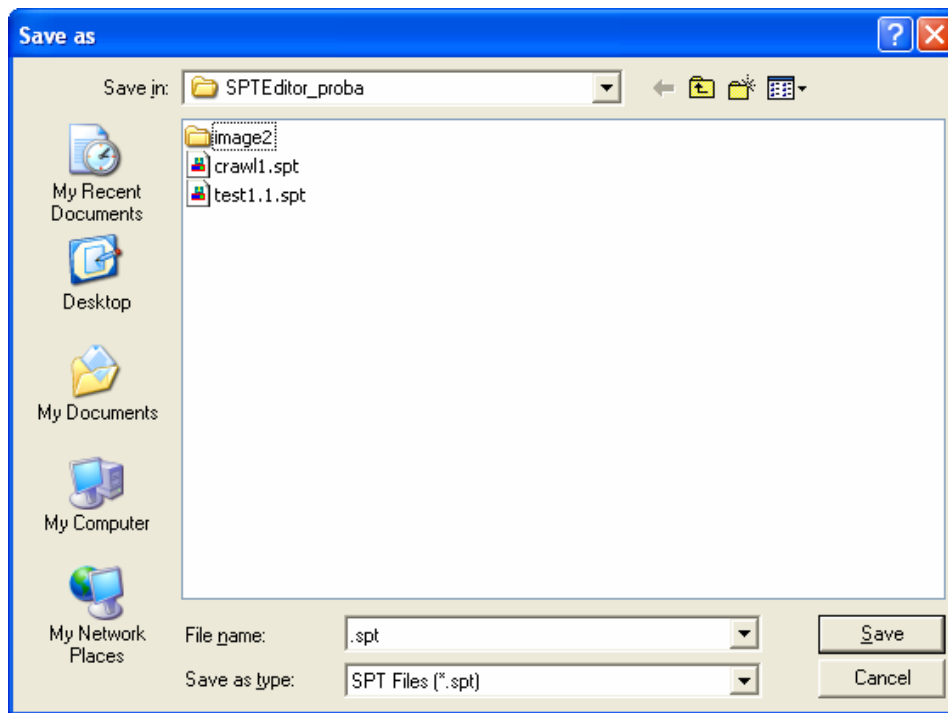


Fig. 6. *Save as* dialog

4 SPT file format

SPT file is a text file (Fig. 7) containing a sequence of lines of the following type:

<reserved word> <path to a graphics file>,

where

< reserved word > is always **targa** (graphics file format)

< path to a graphics file > is full or relative path to a graphics file

Example:

```
targa test001.tga  
targa D:\Work\test002.tga
```

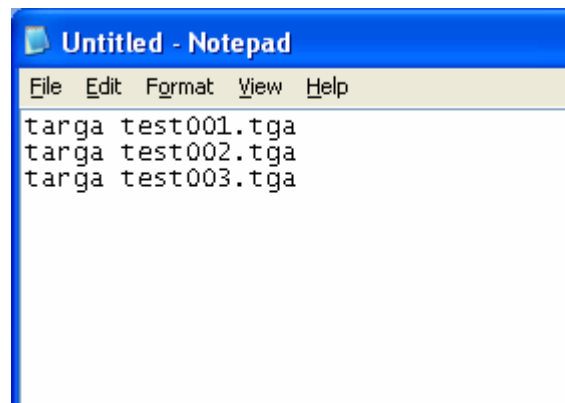



Fig. 7. SPT file example

 *If it is possible, all paths to graphics files are relative, i.e. are traced relative to the location of the SPT file.*

5 Graphics files list

The **Task List** group contains a list of files and a block of buttons for its editing (Fig. 8) The list specifies the graphics files used for the SPT file creation. The task list can include files of the following formats: *.tga; *.png; *.bmp; *.dib; *.jpg.

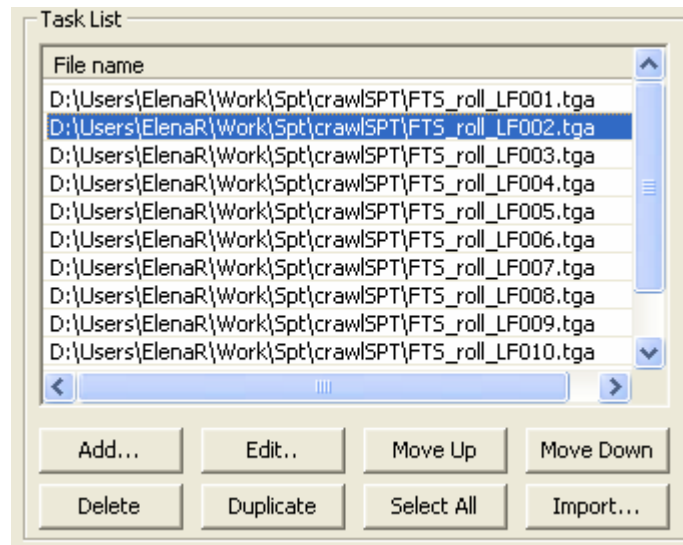


Fig. 8. Graphics files list

5.1 Adding files

It is possible to add files to the list using the **Add...** button for existing graphics files or the **Import...** button for conversion of a text file to a graphics file (see section 8).

The **Add...** button opens an *Add Task* dialog (Fig. 9). The selected files are added to the end of the list or below the last selected task, according to the application settings (see section 7).

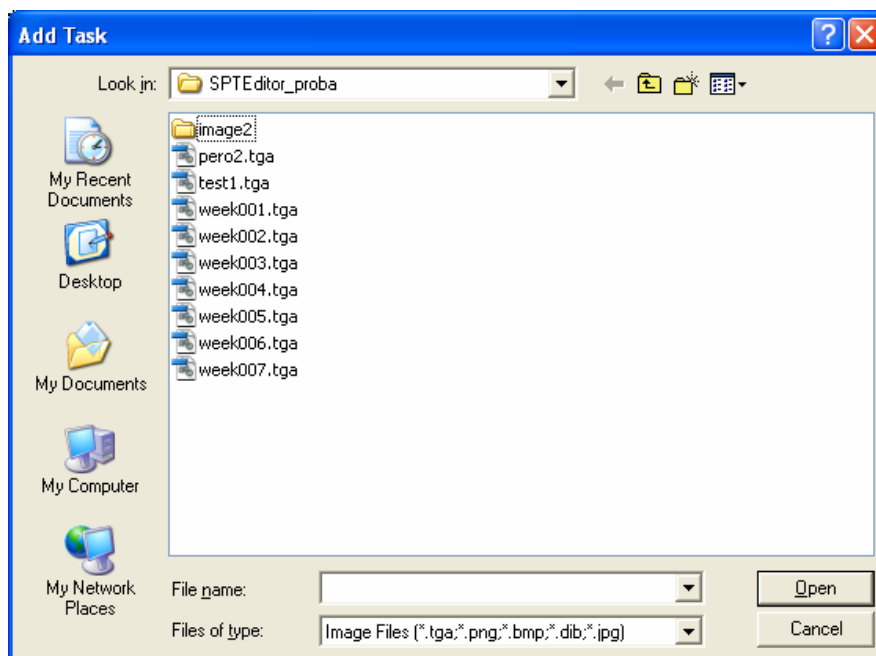


Fig. 9. Add Task dialog

5.2 File replacement

It is possible to replace one file of a task with another. Select a file to be replaced and press the **Edit...** button. In the *Edit Task* dialog select a file to replace the selected one.

5.3 Changing the sequence of graphics files

It is possible to move the selected files in the list using the following buttons: **Move Up** – a line upwards, **Move Down** – a line downwards. It is also possible to move the selected files by drag-and-drop.

5.4 Deleting files

Pressing the **Delete** button deletes all the selected files. Deleting confirmation is requested in the *Delete Image Files* dialog.

5.5 Selecting all files

Pressing the **Select All** button allows to select all files.

5.6 Duplicating files

Pressing the **Duplicate** button allows to duplicate the selected files.

5.7 Editing the Task list with the keyboard and a context menu

It is possible to edit the list of files using the keyboard and a context menu.

Right clicking on the file list opens the contextual menu (Fig. 10) with the following menu items: **Add...**, **Edit...**, **Move Up**, **Move Down**, **Delete**, **Duplicate**, **Select All**, **Import...**, which are completely equivalent to the list editing buttons (see issues 5.1 – 5.6).

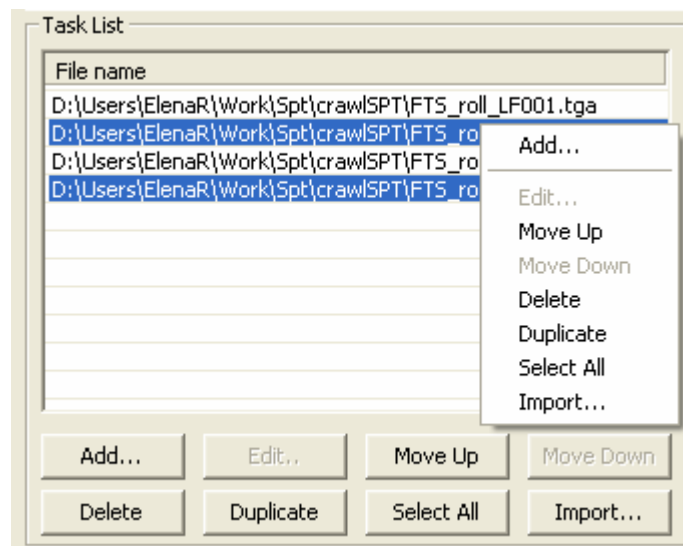


Fig. 10. Task list contextual menu

Some operations with the file list can also be performed with the keyboard. The **Insert** key is equal to the **Add...** button. The **Ctrl+A** keys combination can be used for selecting all files in the list. Array keys with the **Shift** key pressed allow to select a group of files going one after another. If it is necessary to select arbitrary files click the required files with the **Ctrl** key pressed. The selected files can be deleted from the list with the **Delete** key.

6 Preview window

The appearance of the **RollCrawl** task being processed is shown in the preview window (Fig. 11).



Fig. 11. Preview window

One of the **RollCrawl** title element properties is its direction: from left to right / from right to left, bottom-up / top-down (for more details about the **RollCrawl** properties, see the *FDTitle Designer* application User's guide.) It is necessary to select the roll / crawl direction of the **RollCrawl** movement in the *Program Settings* dialog so that the SPT file could be properly displayed in the preview window (see section 7).

An SPT file can be previewed using the scroll bar (the scroll bar settings are specified in the *Program Settings*, see section 7) or using the editing keys: **arrow (up and down) keys, Page Up, Page Down, Home, End.**

The preview window displays the contents of the graphics file currently selected in the file list.

7 Program settings

Pressing the **Settings...** button opens the *Program Settings* dialog (Fig. 12).

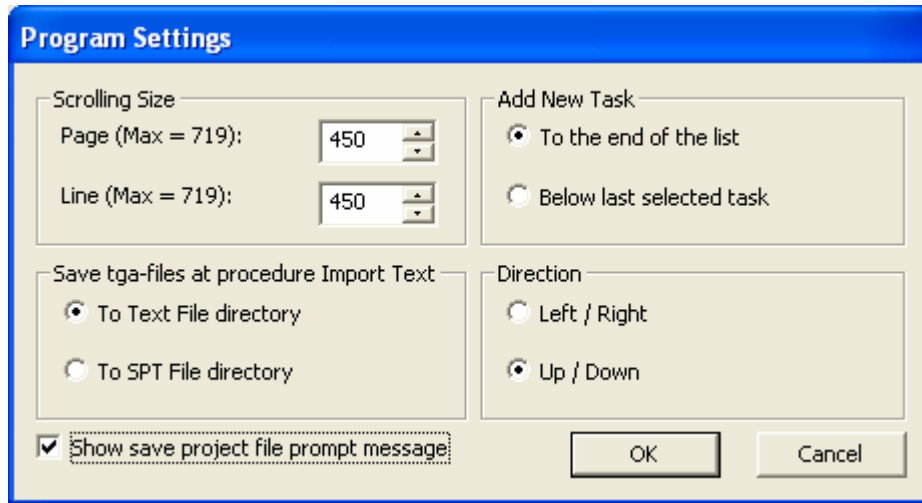
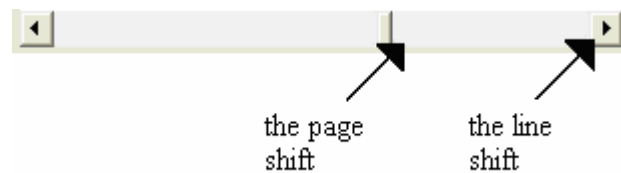


Fig. 12. Program Settings dialog

The scrolling size values are set in the **Scrolling Size** group.

The sizes of the page shift and of the line shift are specified in the *Page* and in the *Line* fields. The maximum values of these parameters are calculated depending on the total length of all previewed tasks. They are displayed in the same group.



The position of a new task in the list is selected in the **Add New Task** group. The **To the end of list** option determines the new tasks position in the end of the list, and the **Below last selected task** option determines adding them after the last task selected in the list.

In the **Save tga-files at procedure Import Text** group it is possible to select a directory to save the results of the text import procedure. If the **To Text File directory** option is set, these files are saved to the directory of the source text file, and if the **To SPT File directory** is set, they are saved to the directory of the task SPT file.

The direction of the **RollCrawl** movement in the preview window is selected in the **Direction** group. The direction depends on the type of the **RollCrawl** title element. The **Left / Right** direction is set to preview a task for the *crawl* type title element. The **Up / Down** direction is selected for the *roll* type element.

The **Show save project file prompt message** check box enables or disables the confirmation for saving changes in an SPT file when exiting the application. If it is checked, the confirmation dialog box appears when the application is closed (Fig. 13).

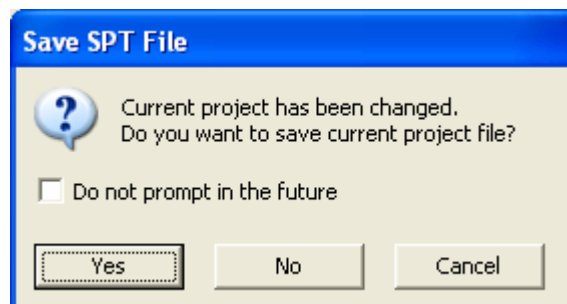


Fig. 13. Confirmation for saving an SPT file

8 Text import

The text import procedure is designed for the conversion of a text file lines to graphics TGA files which can be displayed in the **RollCrawl** title element. The principle of the text import is the same as one used in the *TXT2TGA* application (for more details, see the *TXT2TGA* User's guide).

The image ready for displaying in the **RollCrawl** represents a rectangular area with a filling and text lines arranged in a certain way in it. The rectangular area (the region) design is determined in an *.rgn file, the content of the text is set in a *.txt file, and the text design is set in a styles collection *.efc file. Region and styles collection files are created in the *Forward Titling* application (for details, see the *Forward Titling* User's guide).

8.1 Text file format

A source text file is a sequence of lines of the following type:

N text_1

N text_2

...

N text_m

The first position of each line (**N**) indicates a style number which is a whole number from 0 to 9. It is required to put a space between the number and the advertising text which follows. A line break implies a change to the next advertisement.

If a line feed is required within the bounds of one advertisement, the line feed \n symbol is used. Example:


N text1\n text2

The resulting graphics file will have the text lines one under another, provided that the **Support line feed** option is set:

text1


text2


Both lines will be typed with the same style number **N**.

 **Attention:** when using the line feed option make sure that a font size used in a style allows to fit the entire text in a region vertically. If letters do not fit in the region even partly, the fed line will be left out of the picture!

8.2 Region format

A **RollCrawl** title element belongs to one of two types: the *roll* type implies vertical text movement, and the *crawl* type – horizontal movement. A region file should be created according to the **RollCrawl** type: a rectangular area should be stretched vertically for the *roll* element, and horizontally for the *crawl* element.

 When creating a region pay attention to the correspondence of the rectangular area size and the text lines perspective length.

 If a region is larger than it is required, it is cropped automatically in the proper direction up to the size of the text line (horizontally for the *crawl* and vertically for the *roll*).

Refer to the *Forward Titling* application User's guide for detailed information about region creation.

8.3 Import Text File dialog

Pressing the **Import...** button opens the *Import Text File* dialog (Fig. 14).

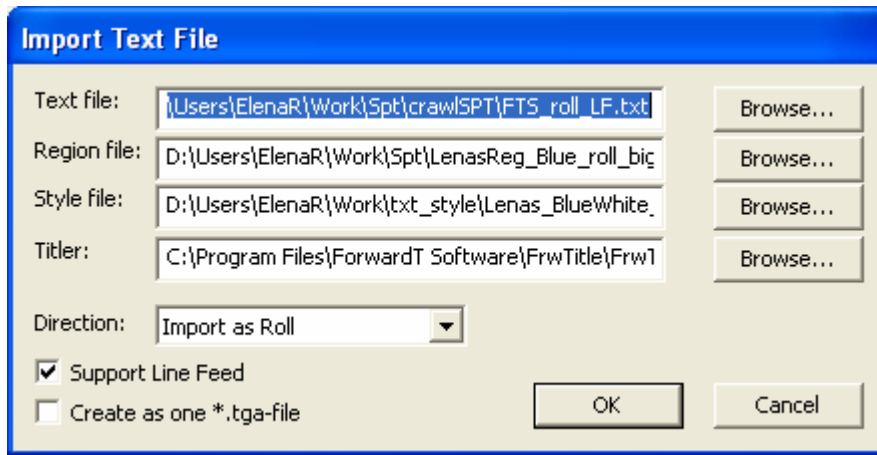


Fig. 14. Import Text File dialog

The *Text file* field is intended for specifying a full path to the text file (*.txt) containing advertisement lines. A text file can be selected with the **Browse...** button, which opens the *Open Text File* dialog.

A region file name (*.rgn) is specified in the *Region file* field. Pressing the **Browse...** button opens the *Open Region File* dialog where the required region file is selected.

The *Style file* field is used for specifying a styles collection file (*.efc). Pressing the **Browse...** button opens the *Open Style File* dialog where the styles collection file is selected.

In the *Titler* field it is necessary to specify the path to the *Forward Titling (DDTitle)* application.

The **Direction** drop-down list is used for choosing the mode of text lines arrangement in the resulting picture, which depends on the **RollCrawl** type. Choosing the **Import as Crawl** option enables horizontal direction of text lines movement. Choosing the **Import as Roll** option organizes the movement vertically, one text line under another.

The **Support Line Feed** check box allows to enable or disable the line feed option. If checked, the line feed symbols specified in the source text file will be considered in the resulting graphics file. If not checked, the line feed symbols in the final text will be replaced with spacings. In this case the line feed is not performed.

Checking the **Create as one *.tga-file** box allows to save the results of text import procedure to the same graphics file as one image. If the check box is not checked, the results are saved in several TGA files, an individual graphics file for each advertisement line.

The created TGA files are placed in a general list according to the application settings (see section 7).

9 Launching the application from the command line

To launch the application using the command line execute a command in the following format:

"full path to the SPTEditor.exe" "full path to an *.spt file"

Example:

"C:\Program Files\ForwardT Software\SPTEditor\SPTEditor.exe" "D:\Test\test.spt"

When the application is launched from the command line, a task list is loaded from the specified SPT file.

10 Usage of the application

Starting the *SPTEditor* opens the main window of the application.

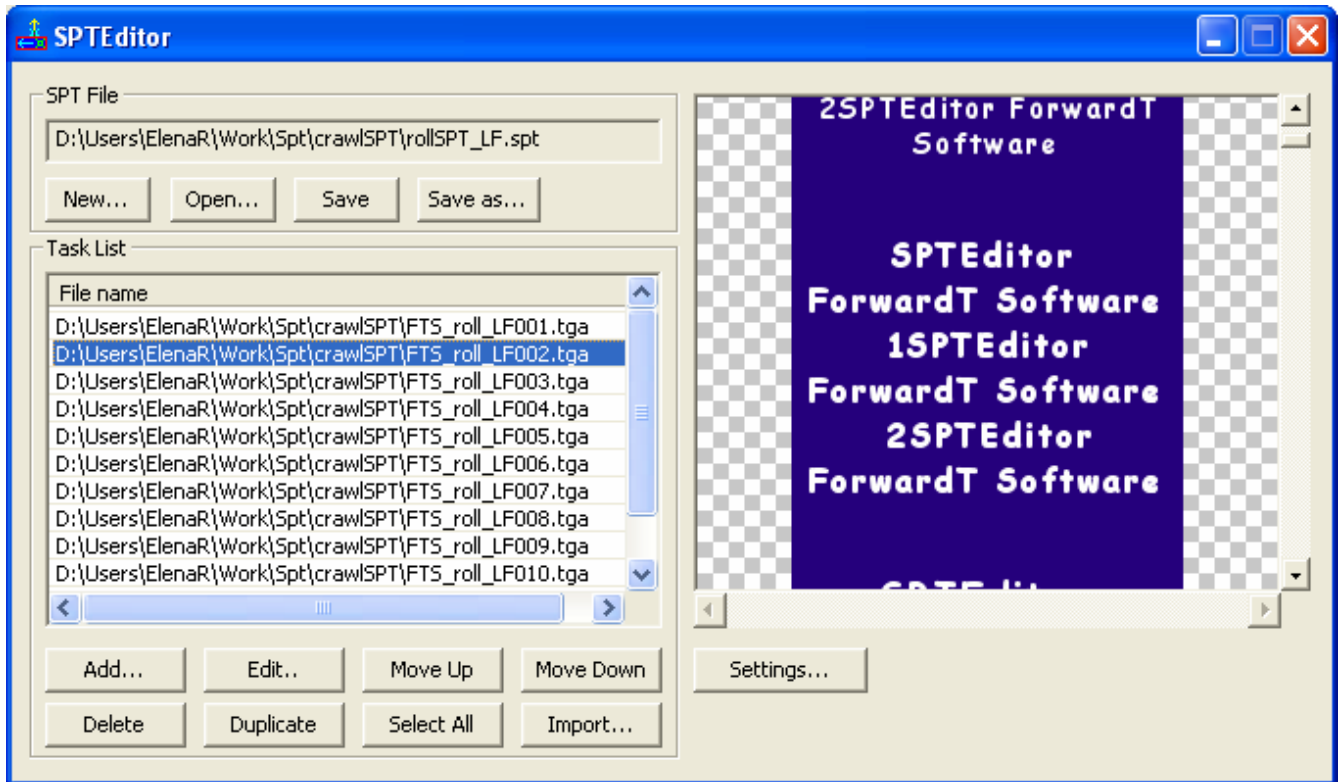


Fig. 15. *SPTEditor* main window

10.1 Program settings adjustment

Start working at the task for **RollCrawl** title element with the application settings adjustment. Open the *Program Settings* dialog using the **Settings...** button (Fig. 15).

In the **Add New Task** group (Fig. 16) choose the mode of placing a new task in a list: in the end of a list or after the selected file.

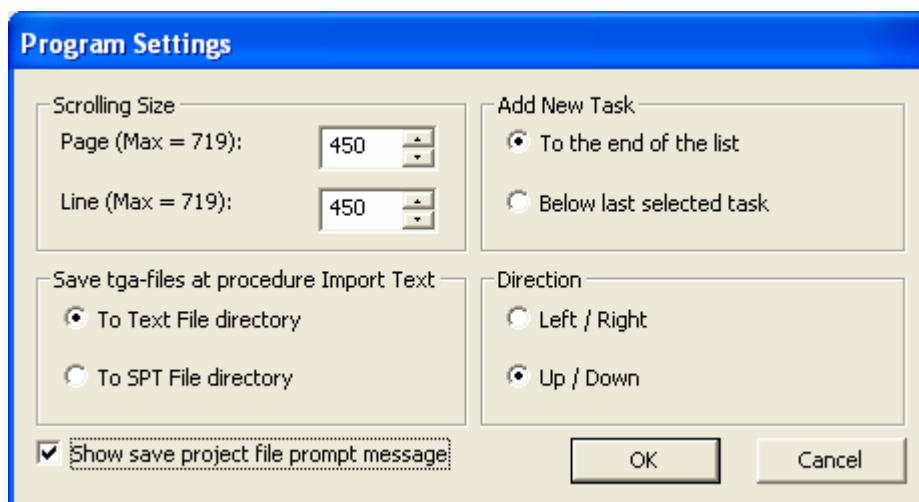


Fig. 16. Program settings window

Adjust the preview window settings using the **Scrolling Size** and **Direction** groups of controls. Specify the scrolling size of the page shift (in the **Page** field) and of the line shift (in the **Line** field) in the **Scrolling Size** group. Select the **RollCrawl** direction according to its type in the **Direction** group.

In the **Save tga-files at procedure Import Text** group select a directory to save graphics files after the text import procedure.

Enable or disable the confirmation for saving changes in the current SPT file when exiting the application using the **Show save project file prompt message** check box.

One can return to the settings dialog any time later at work with the application and make the necessary changes.

10.2 Choosing a task file

A task file is chosen in the **SPT File** group (Fig. 15).

Press the **Open...** button to open an existing file. In the *Open SPT File* dialog select the required file.

Press the **New...** button to create a new SPT file. In the *New SPT File* dialog specify a SPT file name in the *File name* field and choose a folder to save it.

10.3 Making a graphics files list

Make a graphics files list for a task composition: specify file names and determine a sequence. Operations with a files list are performed in the **Task List** group (Fig. 15).

The files that constitute the task are displayed in the **File name** field.

Files can be added to the list using the buttons **Add...**, **Duplicate** (which duplicates the selected files), and **Import...** (creates and adds new graphics files to the list using the text import procedure).

Use the **Delete** button for deleting the selected files from the list.

Use the **Edit...** button for changing a selected file with another one.

The required files can be selected from the list by the conventional operations with the mouse and keyboard. Use the **Select All** button to select all files of a task.

The sequence of files can be adjusted with the buttons **Move Up** (to move the selected files a line upwards) and **Move Down** (to move the selected files a line downwards).

The files list can also be edited with the keyboard and the context menu.

10.4 Text import

The text import procedure is used for creating a graphics file basing on a text file.

Press the **Import...** button opening an *Import Text File* dialog (Fig. 17) to start the procedure.

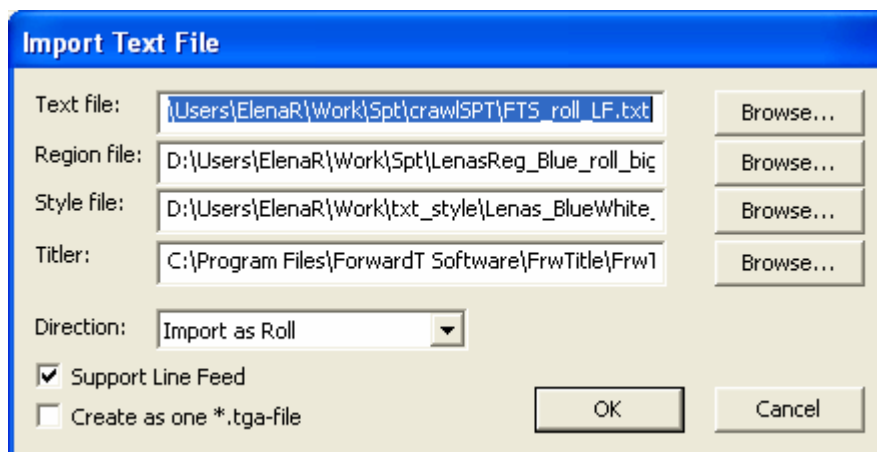


Fig. 17. *Import text file dialog*

Specify the full path to a text file with the advertisement lines in the *Text file* field. Specify a region file path (*.rgn) in the *Region file* field, a styles collection file path (*.efc) in the *Style file* field. Specify the path to the *Forward Titling (DDTitle)* application in the *Titler* field.

It is possible to fill in these text fields using a file open dialog. Press the **Browse...** button located opposite the required field to open this dialog.

In the **Direction** drop-down list choose the **RollCrawl** direction in the resulting picture: horizontal (**Import as Crawl**) or vertical (**Import as Roll**), according to the **RollCrawl** type.

If required, set the line feed option in the **Support Line Feed** check box.

Specify the way of saving the results of the text import procedure. Check the **Create as one *.tga-file** check box to save the results in one graphics file. Otherwise each line of the source text file will be saved in an individual graphics file.

The created TGA files are placed in the general files list according to the application settings.

10.5 Saving a task file

Save an SPT file when a **RollCrawl** task generation is complete.

Press the **Save** button in the **SPT File** group (Fig. 15) to save changes in the current file.

Press the **Save as...** button to save a task file with another name. Specify a new name and a folder in the *Save as* dialog opened by this button.