

# *CopyDR*

## **User's Guide**

Revision from 07 April 2005

ForwardT Software 3.7.0

SoftLab-NSK, Ltd.

## Notice

The information in this document is subject to change without prior notice in order to improve reliability, design, or function and does not represent a commitment on the part of this company.

In no event will we be liable for direct, indirect, special, incidental, or consequential damages arising out of the use or the inability to use the product or documentation, even if advised of the possibility of such damages.

Copyright © 1997 - 2005 SoftLab-NSK, Ltd.  
All Rights Reserved.

No part of this reference manual may be reproduced or transmitted in any form or by any means without the prior written permission of this company.

Throughout this manual, we make reference to product names that are trademarks of other companies. We are using these names for identification purposes only, with no intention of infringement of the trademarks.

## FCC Information

### **FCC ID:**

This equipment has been tested and found to comply with the limits for a Class B digital device, pursuant to Part 15 of the FCC Rules. These limits are designed to provide reasonable protection against harmful interference in a residential installation. This equipment generates uses and can radiate radio frequency energy and, if not installed and used in accordance with the instructions, may cause harmful interference to radio communications. However, there is no guarantee that interference will not occur in a particular installation. If this equipment does cause harmful interference to radio or television reception, which can be determined by turning the equipment off and on, the user is encouraged to try to correct the interference by one or more of the following measures:

- Reorient or relocate the receiving antenna.
- Increase the separation between the equipment and receiver.
- Connect the equipment into an outlet on a circuit different from that to which the receiver is connected.
- Consult the dealer or an experienced radio/TV technician for help.

Shielded cables and I/O cards must be used for this equipment to comply with the relevant FCC regulations. Changes or modifications not expressly approved in writing by SoftLab-NSK, Ltd. may void the user's authority to operate this equipment.

## Limited Warranty

Our company warrants this product against defects in materials and workmanship for a period of one year from the date of purchase. During the warranty period, products determined by us to be defective in form or function will be repaired or replaced at our option, at no charge. This warranty does not apply if the product has been damaged by accident, abuse, misuse, or as a result of service or modification other than by us.

This warranty is in lieu of any other warranty expressed or implied. In no event shall we be held liable for incidental or consequential damages, such as lost revenue or lost business opportunities arising from the purchase of this product.

---

## Table of Contents

TABLE OF CONTENTS .....	3
1 INTRODUCTION .....	4
2 <i>COPYDR</i> MAIN WINDOW .....	5
3 DIRECTORIES ADDITION FOR COPYING .....	6
4 FILES ADDITION FOR COPYING .....	8
5 TASKS LIST FOR COPYING .....	9
6 THE CONTROL BUTTONS OF TASKS LIST FOR COPYING .....	10
7 THE INDICATORS OF COPYING STATE.....	11
8 THE CONTROL BUTTONS OF COPYING.....	12
9 DATA RATE SET AT COPYING.....	13
10 LANGUAGE CHANGE OF INTERFACE.....	14
11 INFORMATION VIEWING ON COPYING RESULTS .....	15

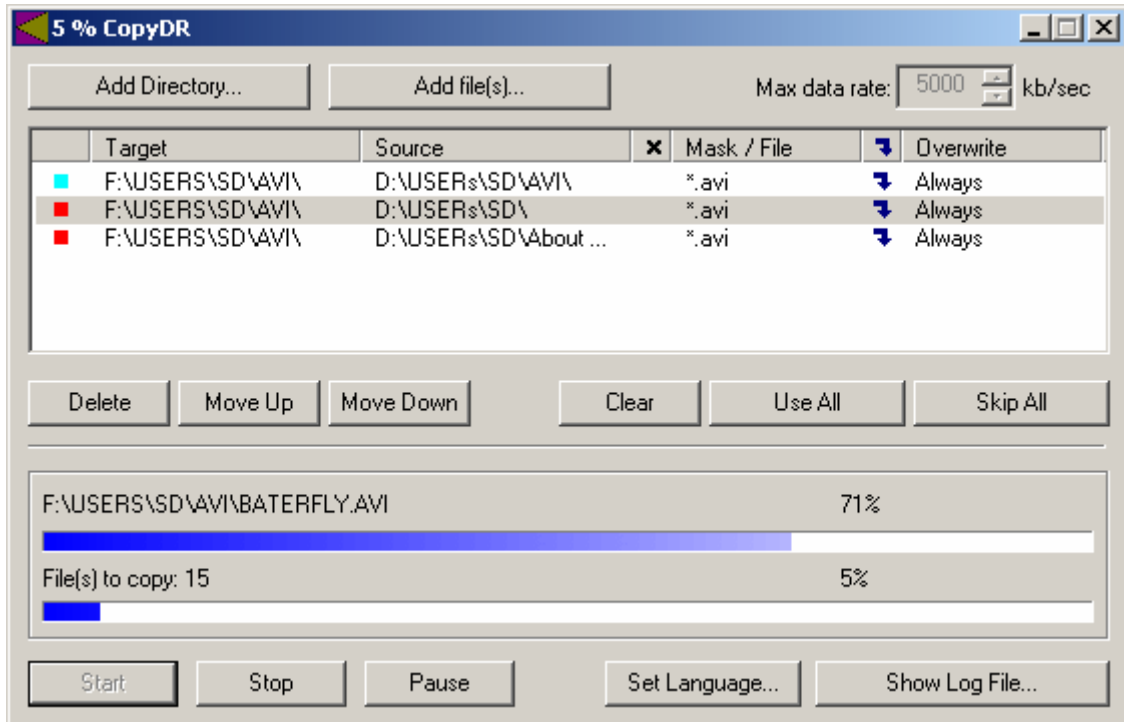
# 1 Introduction

The *CopyDR* application is intended for files copying with the certain data rate. User sets the data rate value. During copying the data rate value is constantly controlled. If it becomes higher than the set level the current data rate value goes down.

The program can copy single files, a files set and the whole directories. The user can change interface language. Developers support Russian.

New objects for copying can be added during copying the previous tasks.

## 2 CopyDR Main Window

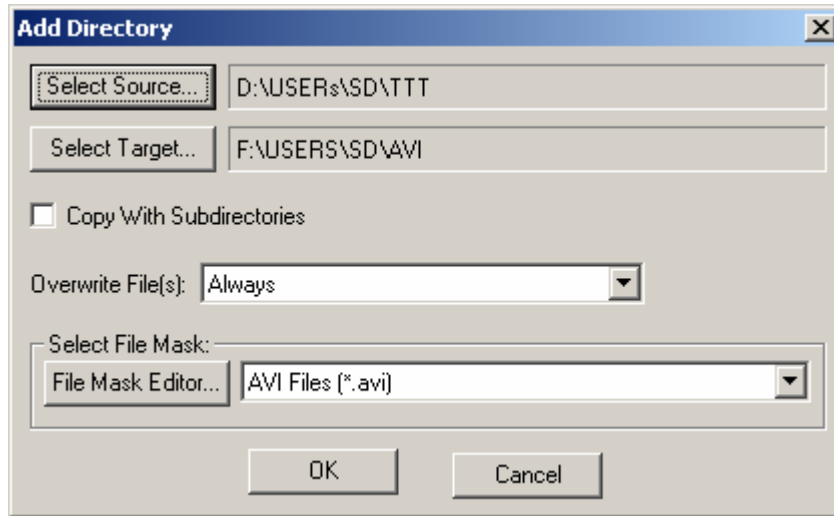


**Figure 1. The main window of CopyDR**

The *CopyDR* main window (Figure 1) contains the buttons to set files/directories for copying and choice of data rate, tasks list and copying state indicators. Tasks list contains copying tasks and its main parameters. Each line in the tasks list is task for copying. Some buttons control tasks list. The copying state indicators in the bottom of main window allows to control execution both the current file, and the task as a whole. Below indicators control buttons of copying process and language choice are located. In the *CopyDR* main window the opportunity of information viewing about copying results also is stipulated.

### 3 Directories addition for copying

The click on the **Add Directory...** button in the main window (Figure 1) opens the *Add Directory* dialog (Figure 2) for choice of folder for copying.

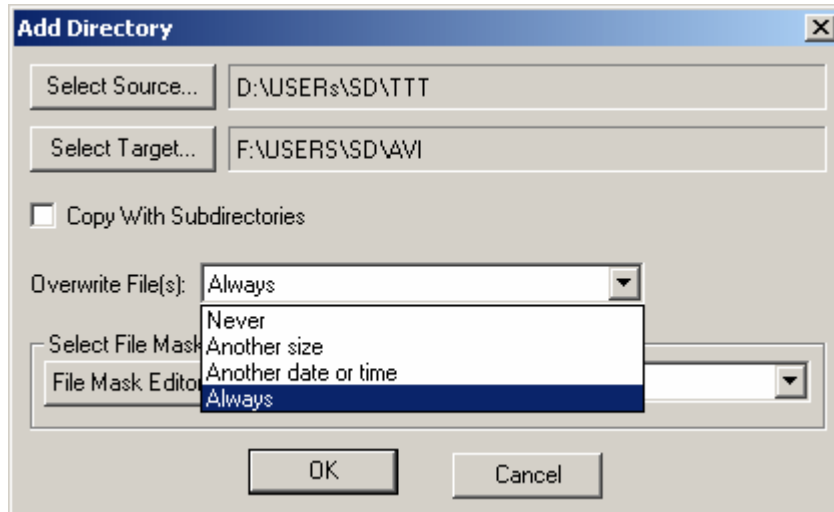


**Figure 2. The *Add Directory* dialog**

The **Select Source...** button of this dialog allows to choose the directory for copying. The **Select Target...** button assigns place to copy data.

The **Copy With Subdirectories** check box allows to set/cancel the copying mode of chosen directory with all its folders.

In the **Overwrite File(s)** drop-down list you can choose the mode of files overwriting, if they already exist in that place where copying is made.



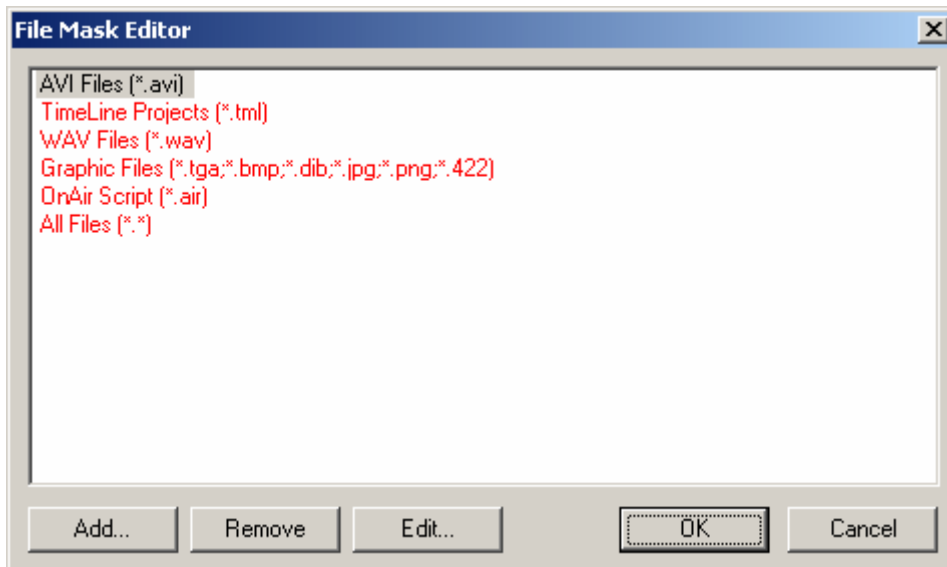
**Figure 3. The files overwriting modes**

There are 4 modes of files overwriting (Figure 3):

- **Never** – to not overwrite a file never;
- **Another size** – to overwrite file in case of sizes convergence;
- **Another date or time** – to overwrite file in case of convergence of date or time of file creation;
- **Always** – to overwrite always.

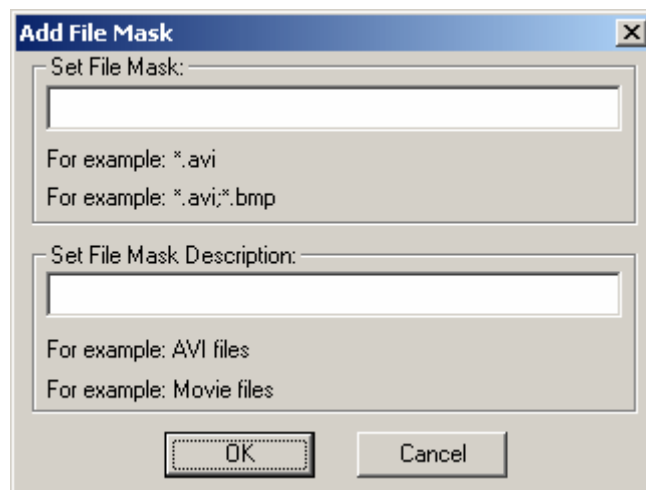
In the **Select File Mask** parameters group you can choose the file mask for files copying. The file mask is the set of file extensions. All files with chosen extensions will be copied, the others – are not copied.

Besides it is possible to create the own file mask and to add it to already available. For this purpose it is necessary to press the **File Mask Editor...** button and to open the *File Mask Editor* (Figure 4) dialog.



**Figure 4. The *File Mask Editor* dialog**

The «standard» file masks – what are built in the program and they cannot be removed or edited – mark off by red color in the *File Mask Editor* dialog (Figure 4). The **Add...** button adds new file mask to already available. Pressing this button opens the dialog *Add File Mask* (Figure 5).



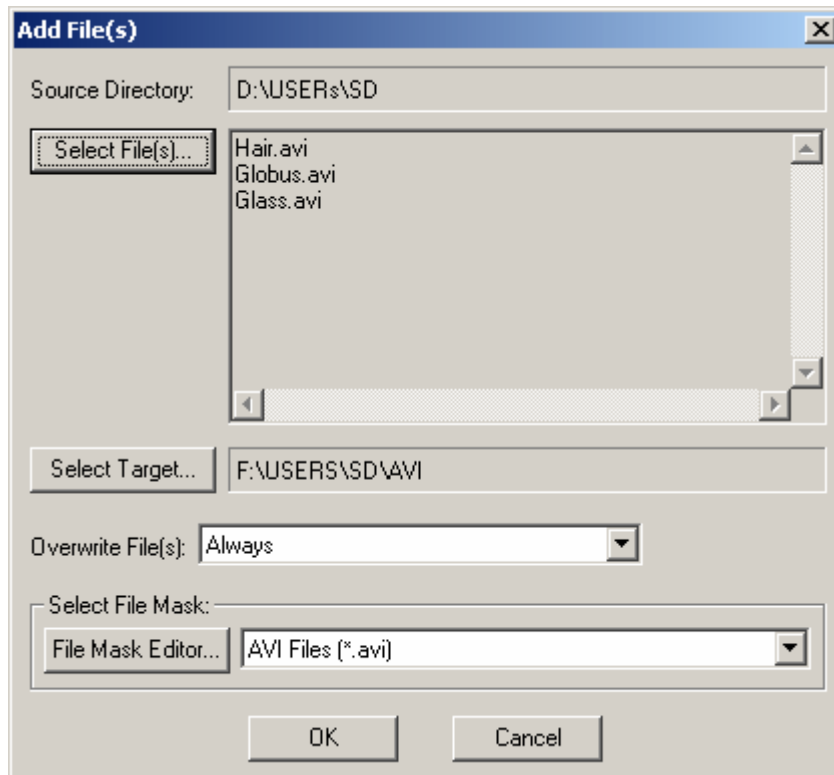
**Figure 5. The *Add File Mask* dialog**

In the **Set File Mask** field of the *Add File Mask* dialog it is necessary to type new file mask – the set of files extensions. If in file mask some files extensions are used they are divided by symbol «;». In field **Set File Mask Description** the description for new file mask is set.

The **Remove** button of the *File Mask Editor* dialog (Figure 4) deletes the chosen file mask. The **Edit...** button allows editing the chosen file mask. The *Edit File Mask* dialog repeats on functionality the *Add File Mask* dialog.

## 4 Files addition for copying

You can choose files for copying in the *Add File(s)* (Figure 6) dialog. Pressing the button **Add File(s)...** in the *CopyDR* main window (Figure 1) opens this dialog.



**Figure 6. The *Add File(s)* dialog**

In the **Source Directory** field of this dialog the path to folder with chosen files for copying is indicated.

Pressing the **Select File(s)...** button opens dialog of files choice for copying. In the field near button the chosen files are showing. Each of files represents the separate task for copying in the tasks list.

Pressing the **Select Target...** button opens dialog of folder choice for files copying.

In the **Overwrite File(s):** drop-down list you can choose the files overwriting mode (see 3) if these files already exist in that place where copying is made.

The file mask (see 3) for files copying gets out/is edited in the **Select File Mask** parameters group.



## 5 Tasks list for copying

The tasks list of the main window (Figure 1) contains the tasks for copying and its general parameters. The list consists of 7 columns, which are described below under the order (from left to right).

1. In the first column the current task state is displayed: it is not executed, during execution, it is executed.
2. Column **Target** shows path to directory where copying is carried out. At button mouse double-click on cells in this column there is dialog *Change Target Directory* (Figure 7) in which you can change the chosen directory.

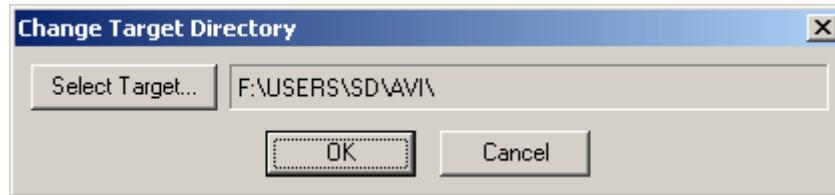


Figure 7. The *Change Target Directory* dialog

3. The **Source** column shows the path to directory where from copying is made. The button mouse double-click on the cells in this column opens the *Change Source Directory* dialog (Figure 8), in which you can change the chosen directory.

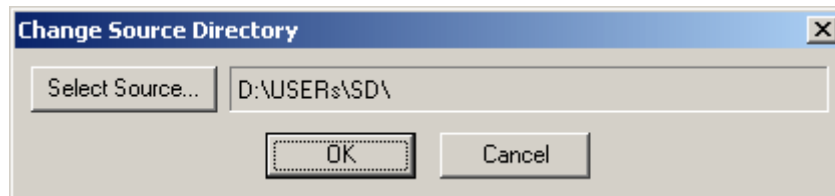


Figure 8. The *Change Source Directory* dialog

4. In the fourth column it is possible to choose copying mode with/without the included directories. This mode is used, only if the task for copying is the directory. To set/cancel copying mode with the included directories it is necessary to double-click of mouse button on cell in this column.
5. In column **Mask/File** for tasks-files the file name is showing, and for tasks-directories – the file mask is shown. The mouse button double-click on cells in this column (if this task – the directory) opens the dialog *Change File Mask* (Figure 9) in which it is possible to change the chosen file mask.

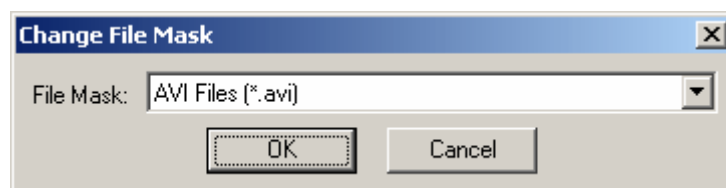


Figure 9. The *Change File Mask* dialog

6. In the sixth column it is possible to set/cancel the chosen task for copying. For this purpose it is necessary to double-click 2 on cell in this column.
7. The **Overwrite** column displays the current mode of files overwriting. The mouse button double-click on cells in this column opens the dialog *Change Overwrite Type* (Figure 10) in which it is possible to change type of file overwriting.

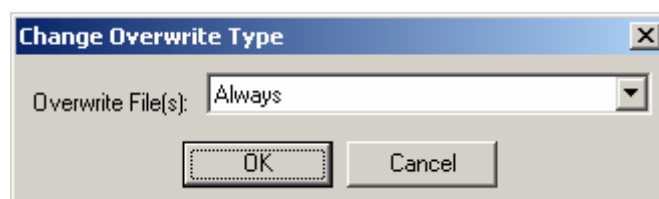


Figure 10. The *Change Overwrite Type* dialog

## 6 The control buttons of tasks list for copying



The **Delete** button deletes chosen task from list.

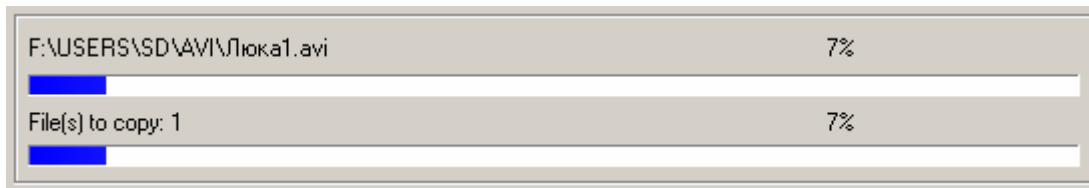
The **Move Up** and **Move Down** buttons allow changing tasks order for copying.

The **Clear** button completely clears tasks list for copying.

The **Use All** and **Skip All** buttons choose/cancel all (!) tasks for copying in the list.

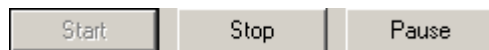
---

## 7 The indicators of copying state



The top indicator shows copying state of the current file, bottom indicator – all task. During copying the information on execution percent, the current file name and quantity of files for copying are displayed.

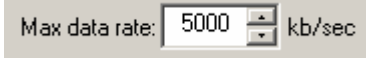
## 8 The control buttons of copying



Pressing the **Start** button starts copying. The **Stop** button stops the copying process. The **Pause** button allows to interrupt copying and then to begin it again.

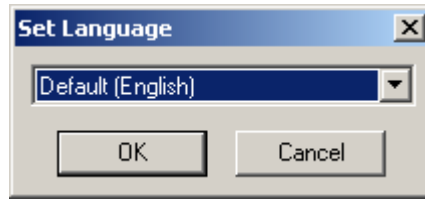
---

## 9 Data rate set at copying

The simple combo-box  in the right top part of main window (Figure 1) is used for data rate set at copying. During copying the data rate is constantly supervised. If it becomes higher than the set level the current size of data rate goes down.

## 10 Language change of interface

Pressing the button **Set Language...** in the main window (Figure 1) opens the *Set Language* dialog (Figure 11) in which you can set necessary language of program interface.



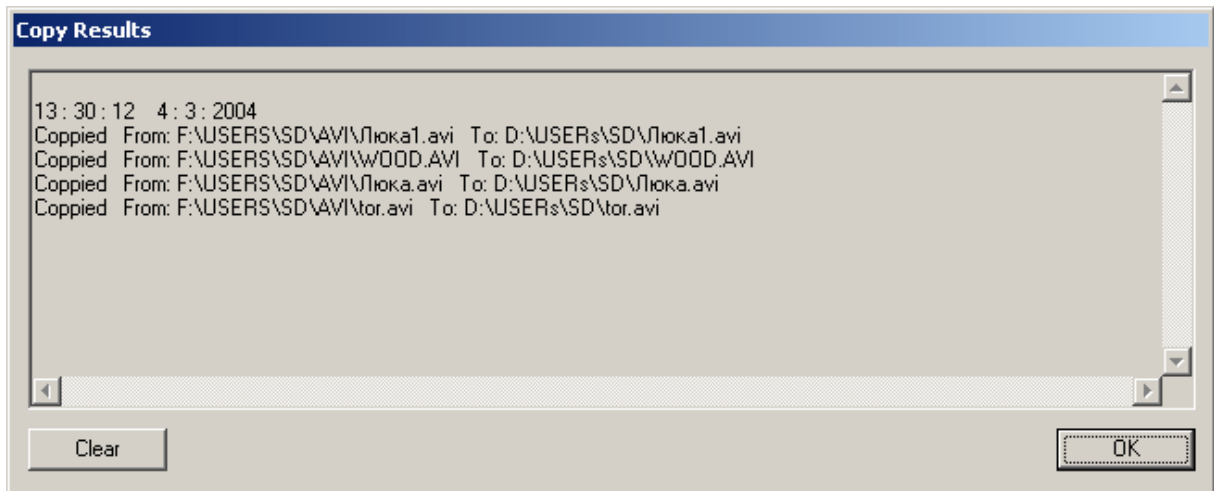
**Figure 11.** The *Set Language* dialog

English language is by default settled. Developers carry out support of Russian. To use other languages except for English file presence with language support library near to program *CopyDR.exe* is necessary. These libraries have the names consisting of prefix *CopyDRLang\_* and the name of language. For example, for Russian is *CopyDRLang\_Rus.dll*.

---

## 11 Information viewing on copying results

Pressing the **Show Log File** button in the main window (Figure 1) opens the *Copy Results* dialog (Figure 12), in which you can view the copying results.



**Figure 12.** The *Copy Results* dialog

In the window of this dialog time and date started of copying and also the files copied by the moment of dialog opening are displayed.

The **Clear** button clears completely field with copying results.